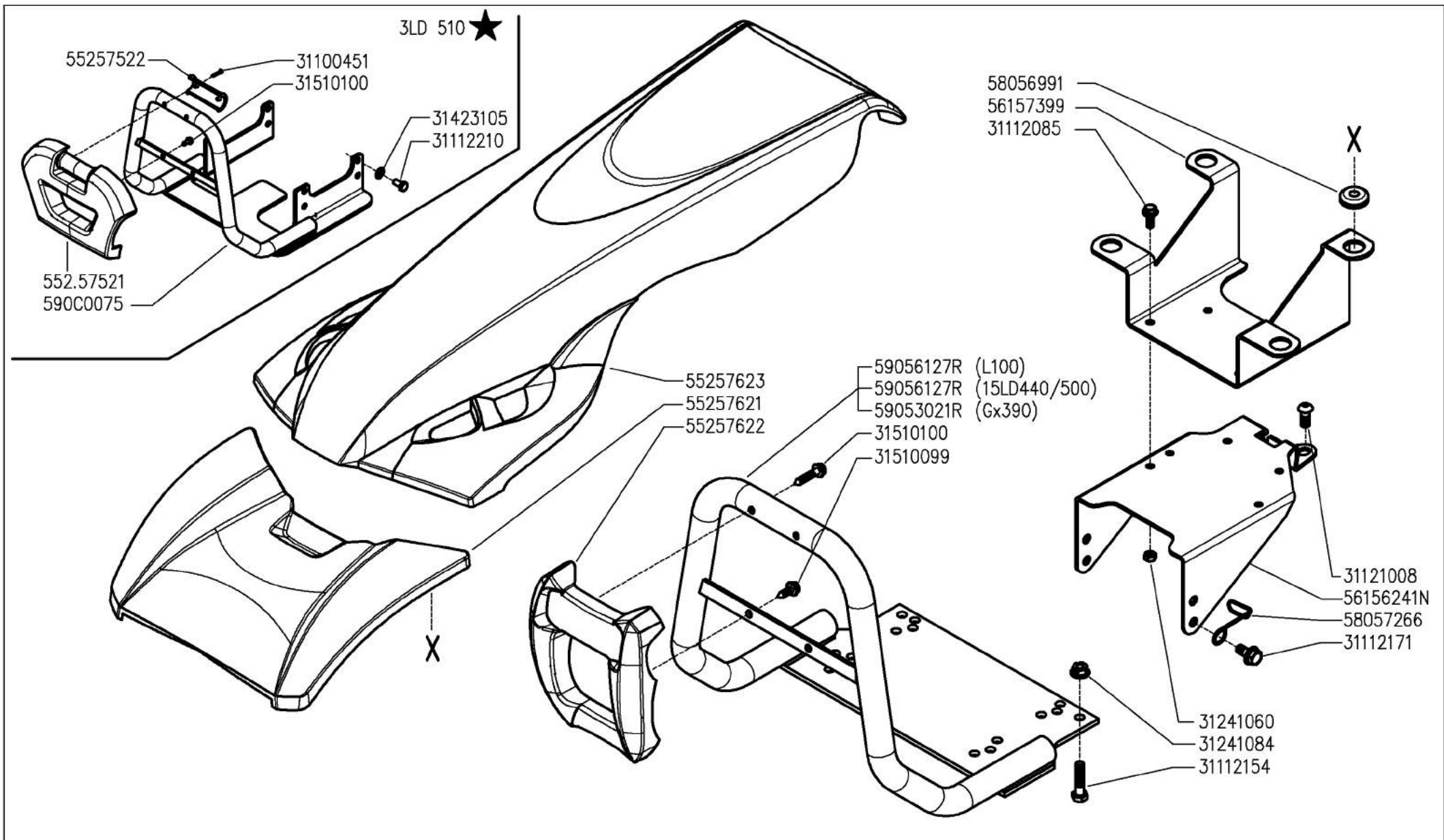


Codice	Descrizione	Note
A02_1_132271	PROTEZIONE MOTORE (740 _ 746 _ 750)	
A.02.01.A0001_02	PROTEZIONI MOTORE (740_746_750)	
A.02.01.A0001_03	PROTEZIONI MOTORE (740_746_750)	
B01_2_132294	COMANDO FRIZIONE POWERSAFE	
B.01.01.A0001_03	COMANDO FRIZIONE POWERSAFE	
C01_1_125029	CILINDRO E FRIZIONE POWERSAFE	
C.01.01.A0001_02	CILINDRO E FRIZIONE POWERSAFE	
D01_1_132326	GRUPPO FILTRO POWERSAFE	
D.01.01.A0001_02	GRUPPO E FILTRO POWERSAFE	
D.01.01.A0001_03	GRUPPO E FILTRO POWERSAFE	
E01_1_132337	MOZZI FRIZIONE POWERSAFE	
F01_1_132354	FLANGE MOTORE	
G03_0_132378	SCATOLA CAMBIO (750)	
G04_0_132403	CARENATURA (750)	
H03_1_132413	INGRANAGGI CAMBIO (740_746_750)	
H.03.02.A0001_02	INGRANAGGI CAMBIO (740-746-750)	
H.03.02.A0001_03	INGRANAGGI CAMBIO	
I04_1_132462	ASSE RUOTE (746_750)	
J03_1_132497	PIANTONE (740_746_750)	
J03_2_132500	PIANTONE (740_746_750)	
K03_1_132519	MANUBRIO (740_746_750)	
L03_1_132553	COMANDI SUL MANUBRIO (730_740_746_750)	
L.03.01.A0001_02	COMANDI SUL MANUBRIO (730_738_740_746_750)	
M03_1_132596	COMANDI (740_746_750)	
N02_1_132637	FRENI (730_740_746_750)	
N.02.01.A0001_02	FRENI (730_730ED_738_740_746_750)	
P01_1_132651	RUOTE	
Q01_0_117864	AVVIAMENTO ELETTRICO	
Q01_1_136416	AVVIAMENTO ELETTRICO	
R01_0_117889	ADESIVE	
R02_1_132700	ADESIVE	
R.02.01.A0001_02	ADESIVE	
R.02.01.A0001_03	ADESIVE	
S.01.01.A0001_00	KIT COFANO MOTORE	



700 serie PS
PowerSafe®

ENGINE PROTECTIONS
PROTECCIONES MOTOR

PROTEZIONI MOTORE
(740 / 746 / 750 ★)

PROTECTIONS MOTEUR
MOTORSCHUTZ

DALLA MACCHINA
DE LA MAQUINA
DE LA MAQUINA
FROM THE MACHINE
AB DER MASCHINE



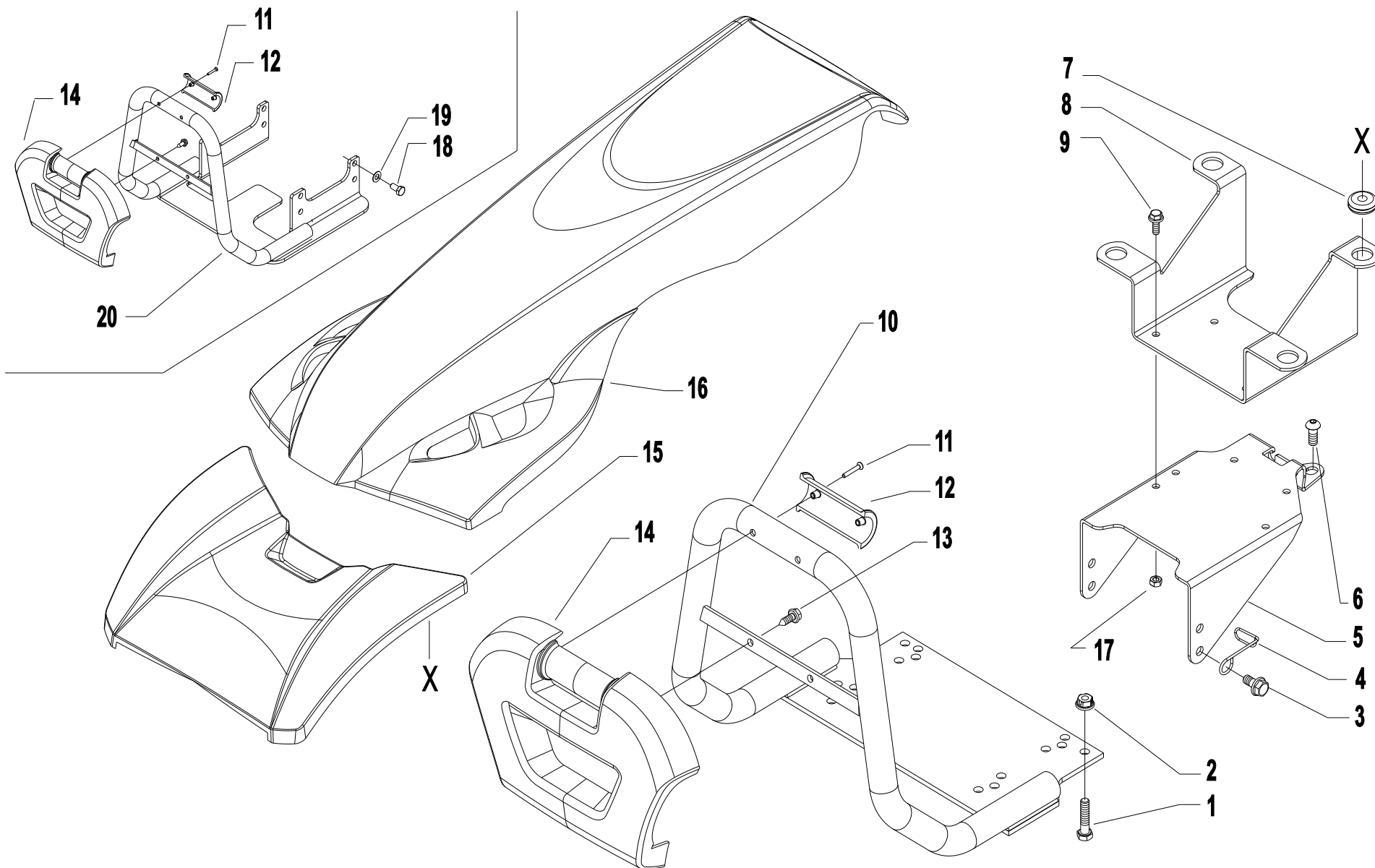
AGGIORNAMENTO
APLAZAMIENTO
MISE A JOUR
REVISION
ANPASSUNG

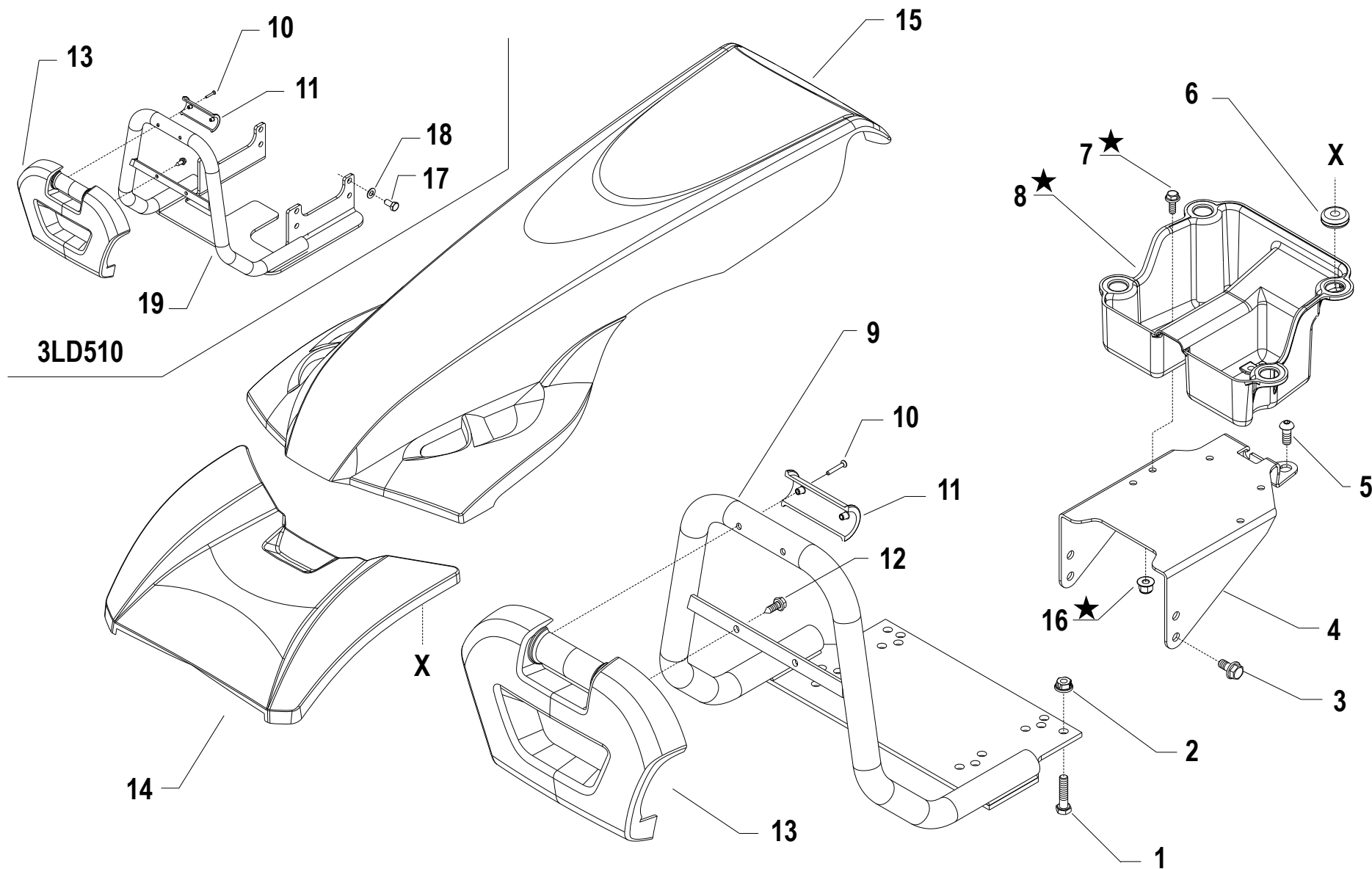
A02

11/2010

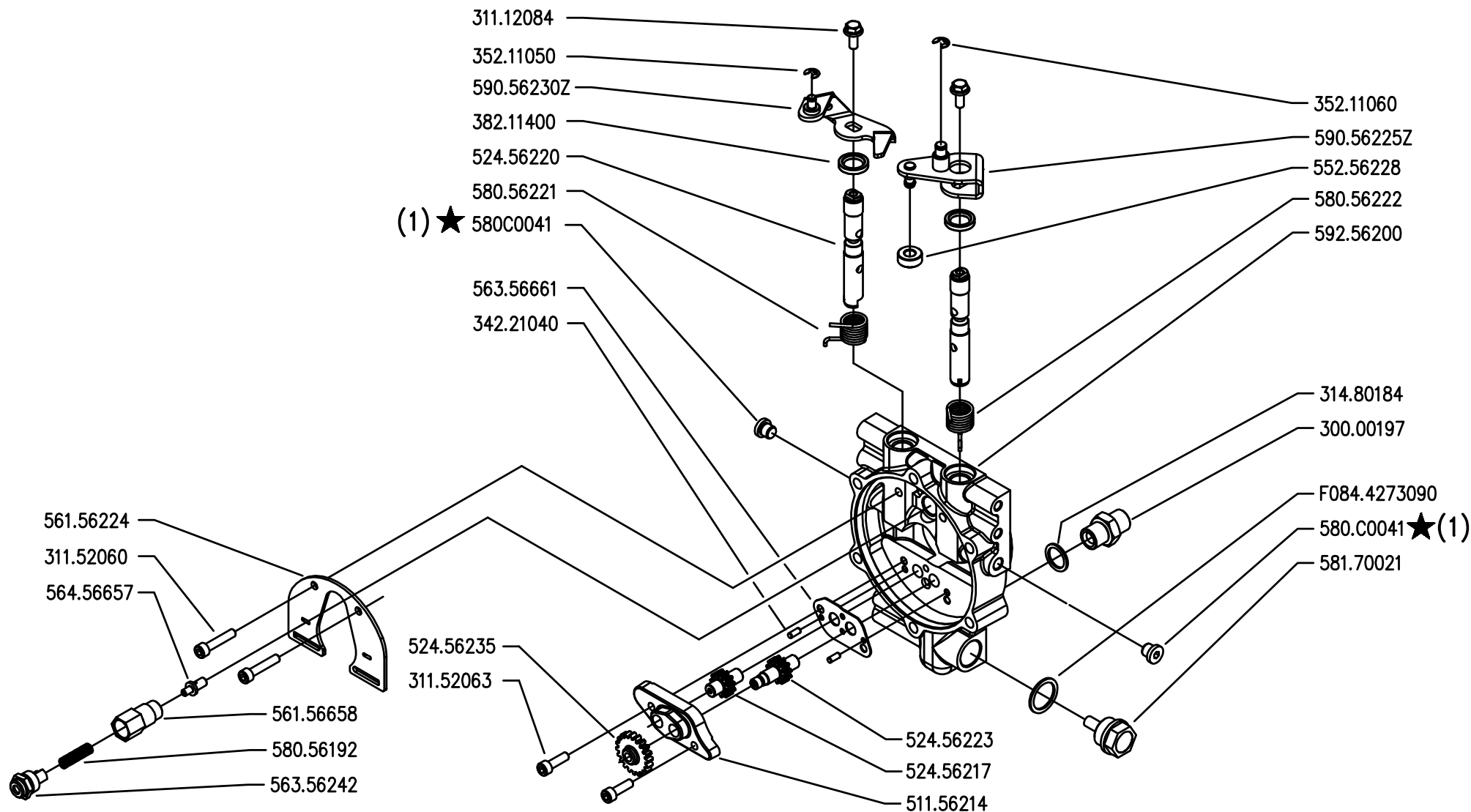
Rev.

1





i = info - stop 2 sec. ★ = new part



(1) sostituisce (580.56798Z + 314.80180)



700 serie PS
PowerSafe®

COMANDO FRIZIONE POWERSAFE

POWERSAFE CLUTCH CONTROL
CONTROL EMBRAGUE POWERSAFE

CONTRÔLE EMBRAYAGE POWERSAFE
REGELUND POWERSAFE KUPPLUNG

DALLA MACCHINA
DE LA MAQUINA
DE LA MACHINA
FROM THE MACHINE
AB DER MASCHINE



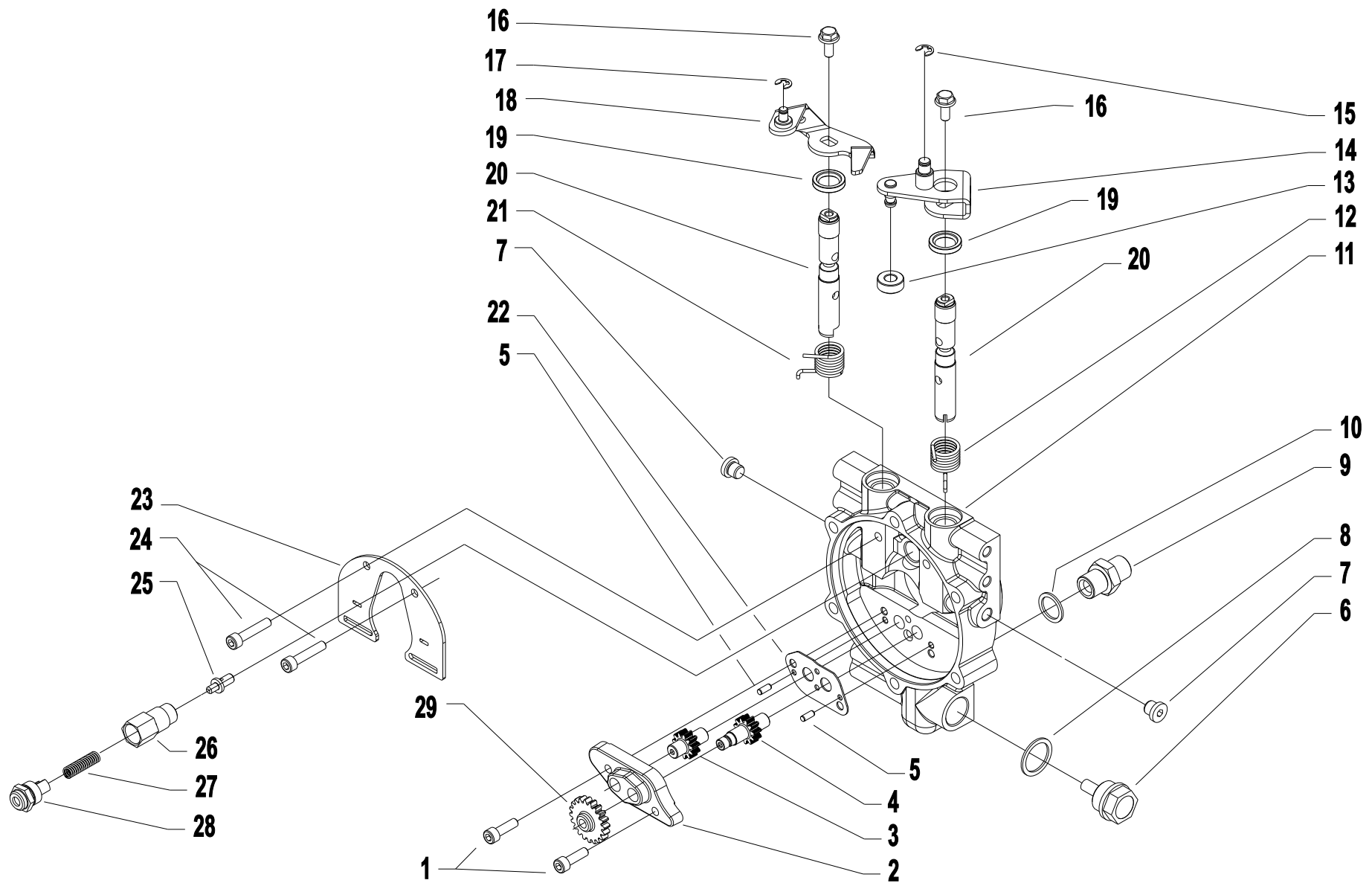
N.

AGGIORNAMENTO
APLAZAMIENTO
MISE A JOUR
REVISION
ANPASSUNG

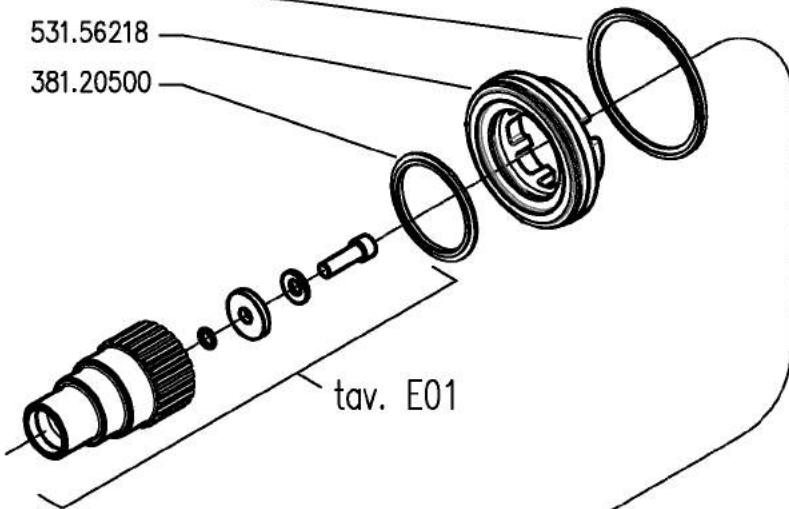
B01

Rev.
2

09/2010



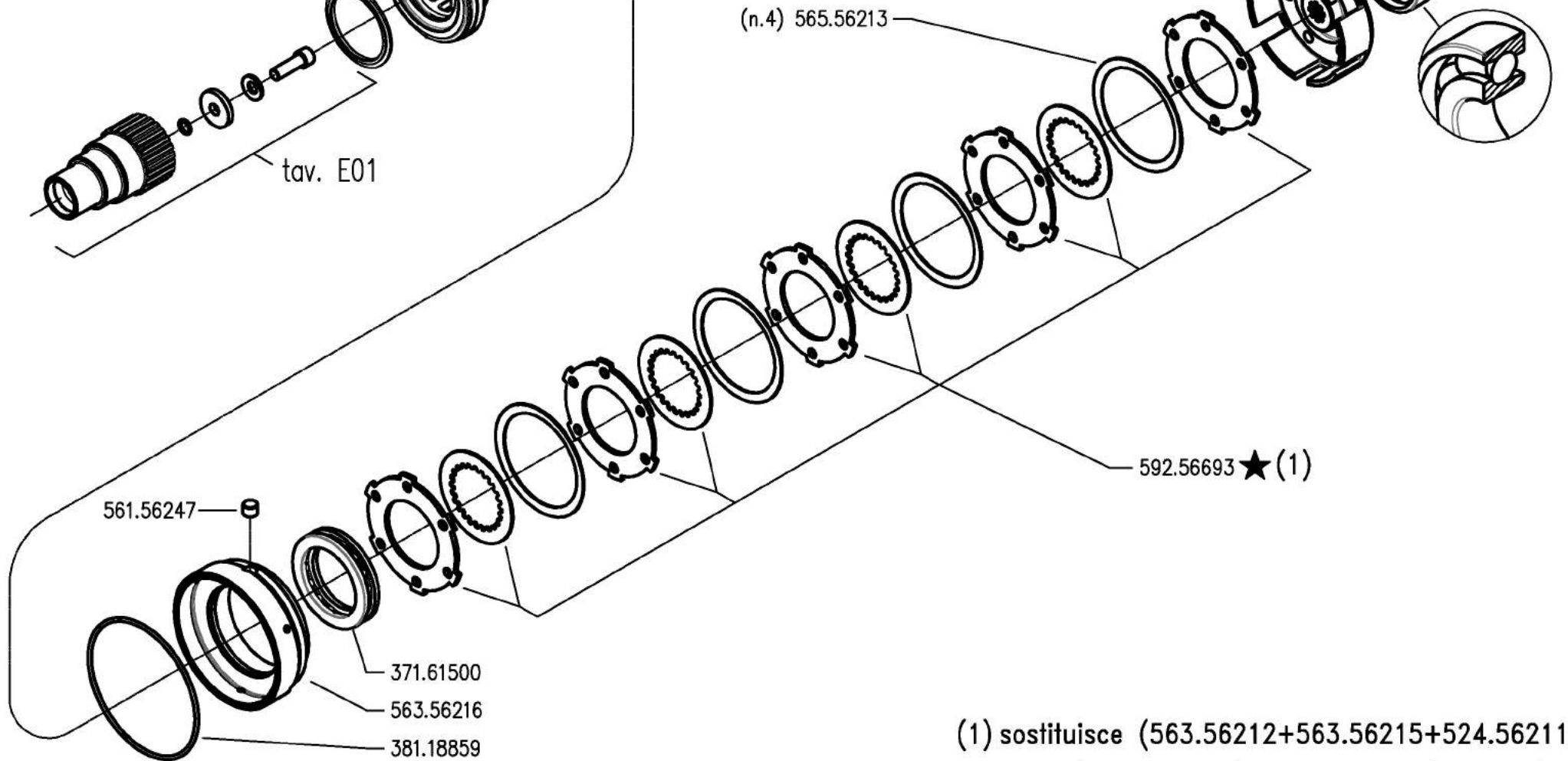
381.40850
531.56218
381.20500



tav. E01

531.56210
371.41253
(1) ★ 524.56694

(n.4) 565.56213



592.56693 ★ (1)

561.56247

371.61500
563.56216
381.18859

(1) sostituisce (563.56212+563.56215+524.56211)



700 serie PS
PowerSafe®

CILINDRO E FRIZIONE POWERSAFE

CYLINDER AND POWERSAFE CLUTCH
CILINDRO Y EMBRAGUE POWERSAFE

CYLINDER ET EMBRAYAGE POWERSAFE
ZILINDER UND POWERSAFE KUPPLUNG

DALLA MACCHINA
DE LA MAQUINA
DE LA MACHINA
FROM THE MACHINE
AB DER MASCHINE

★ N.

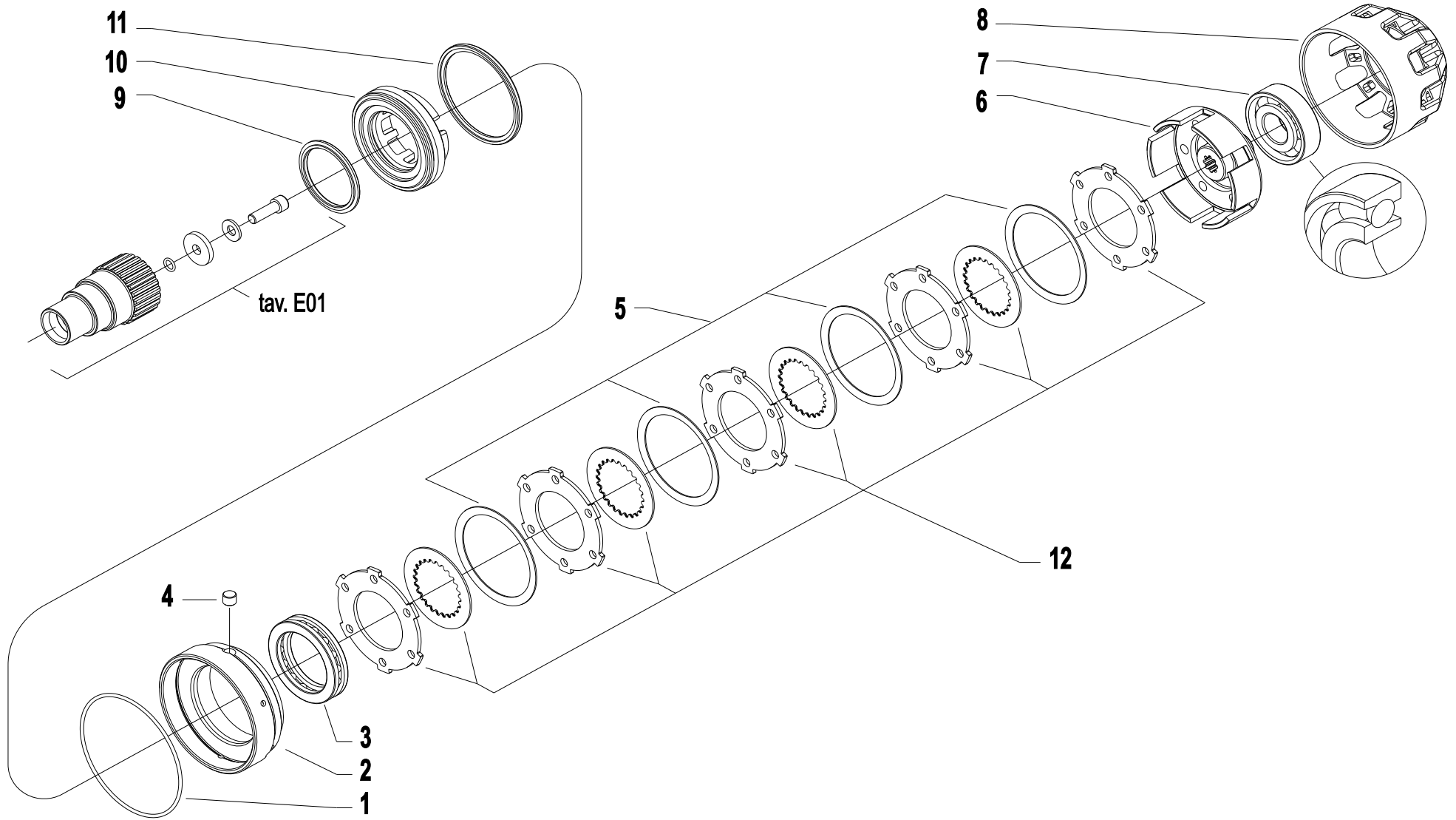
852604

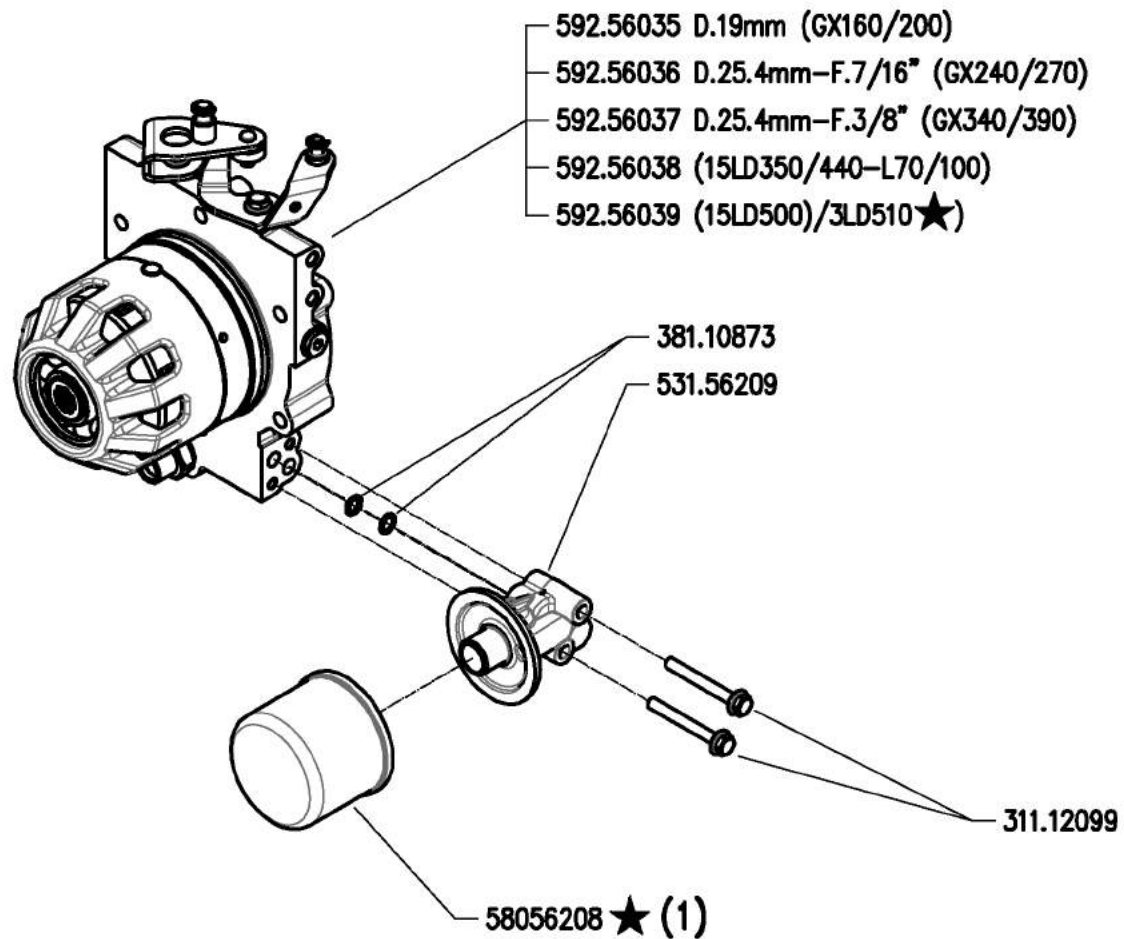
C01

Rev.

1

04/2010





(1) sostituisce 580.56249



700 serie PS
 PowerSafe®

GRUPPO E FILTRO POWERSAFE

POWERSAFE FILTER AND UNIT
 FILTRO POWERSAFE

FILTRE POWERSAFE
 POWERSAFE FILTER

DALLA MACCHINA
 DE LA MAQUINA
 DE LA MACHINA
 FROM THE MACHINE
 AB DER MASCHINE

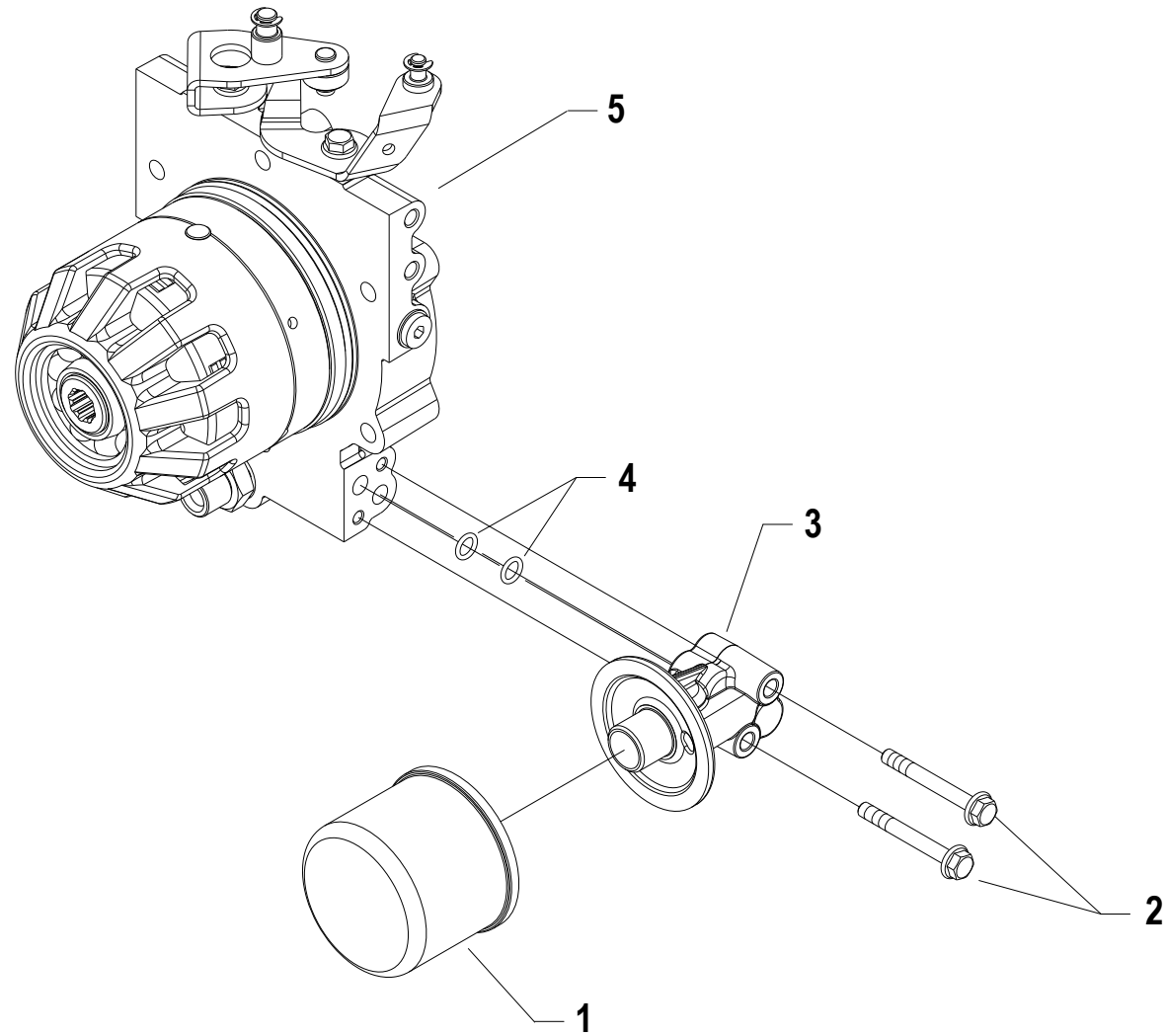
★ N.

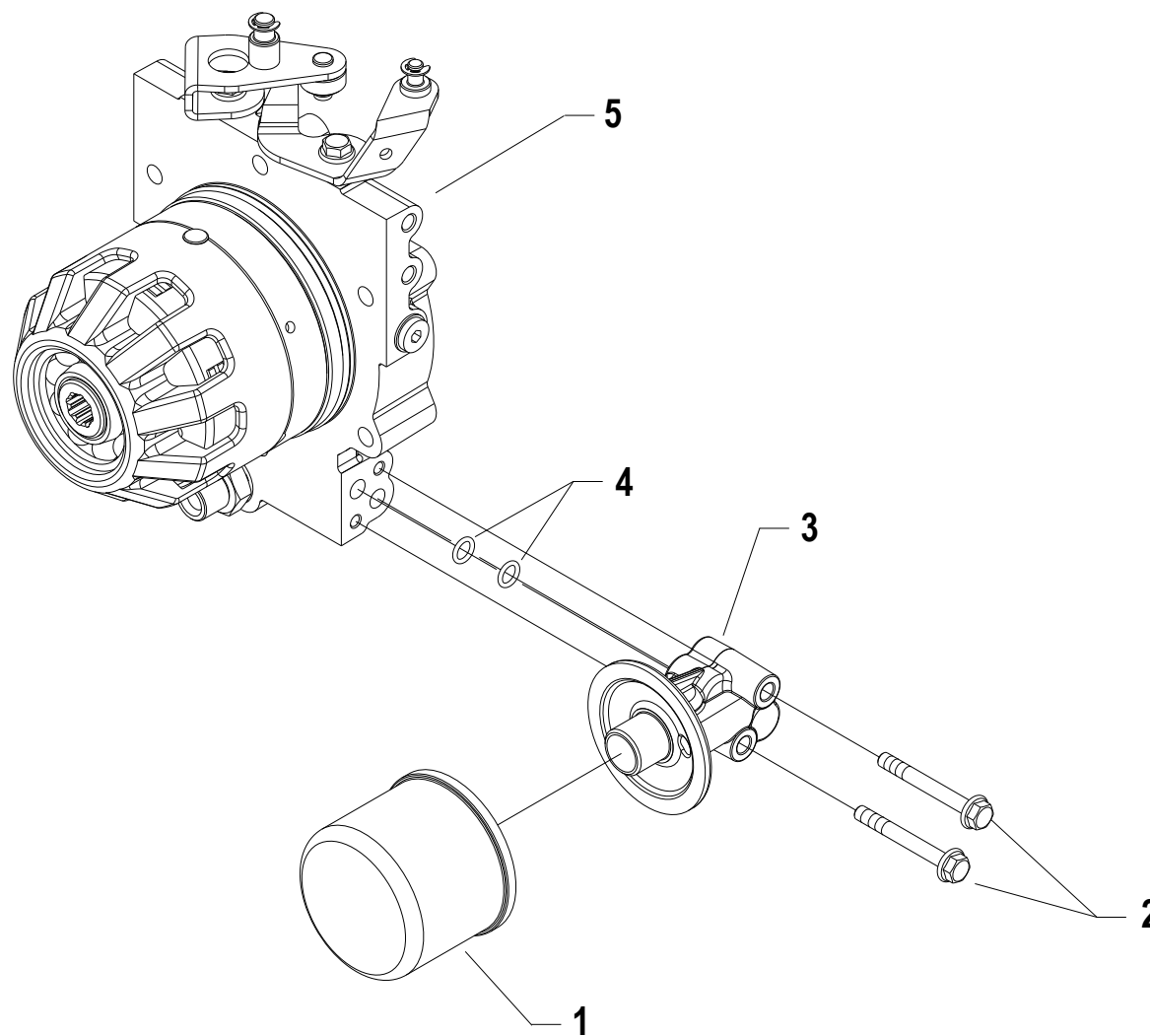
AGGIORNAMENTO
 APLAZAMIENTO
 MISE A JOUR
 REVISION
 ANPASSUNG

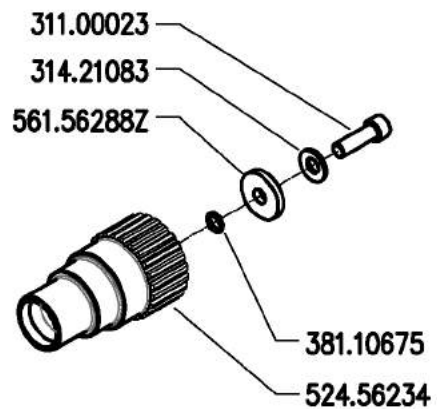
D01 1

11/2010

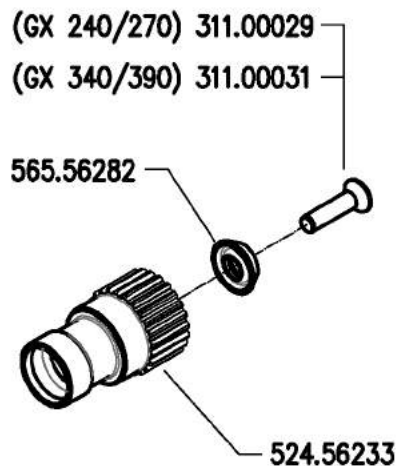
Rev. 1
 DITE.BCS - Scala 1:6



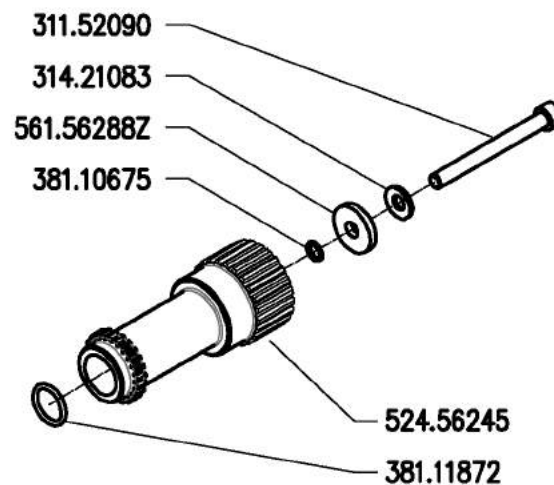




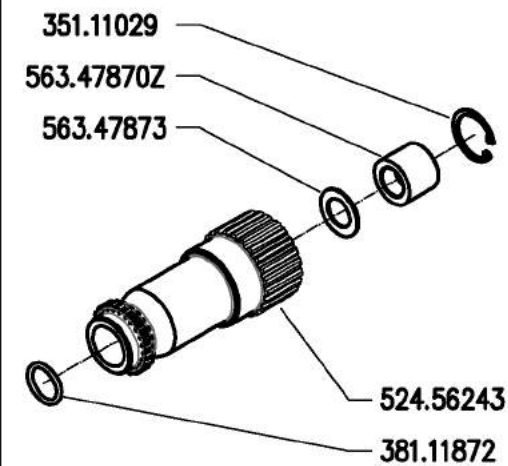
GX 160-200



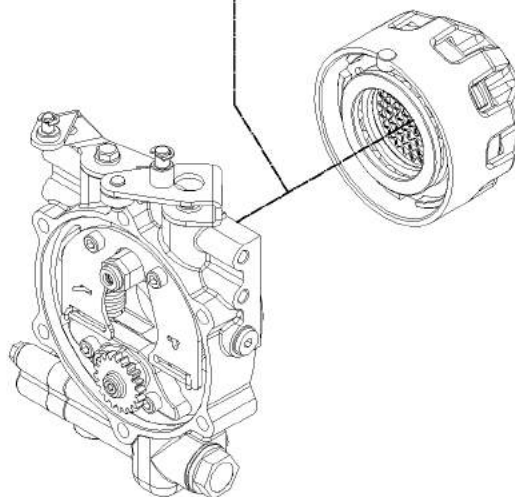
GX 240-270-340-390



15LD350-440 - L70-100



15LD500 - 3LD510 ★



700 serie PS
PowerSafe®

MOZZI FRIZIONE POWERSAFE

POWERSAFE CLUTCH HUBS
CUBOS EMBRAGUE POWERSAFE

MOYEURS EMBRAYAGE POWERSAFE
NABEN POWERSAFE KUPPLUNG

DALLA MACCHINA
DE LA MAQUINA
DE LA MACHINA
FROM THE MACHINE
AB DER MASCHINE

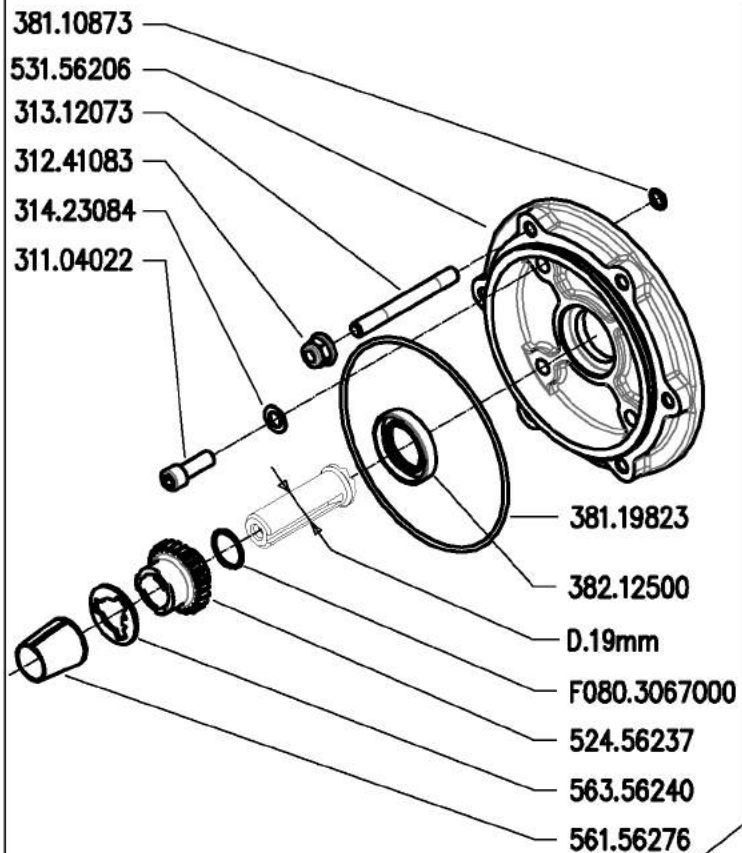


AGGIORNAMENTO
APLAZAMIENTO
MISE A JOUR
REVISION
ANPASSUNG

E01

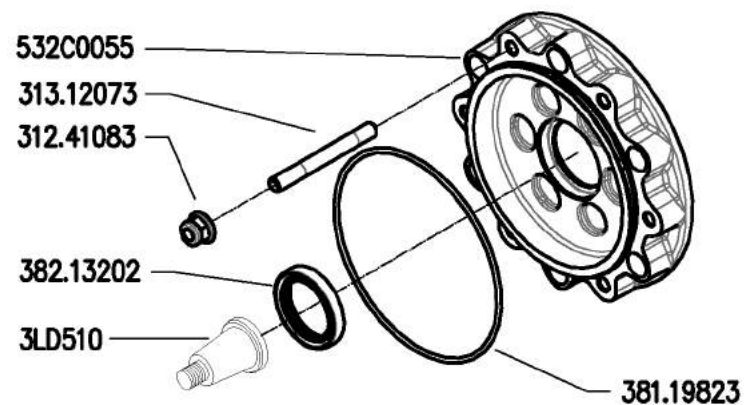
11/2010

Rev. 1

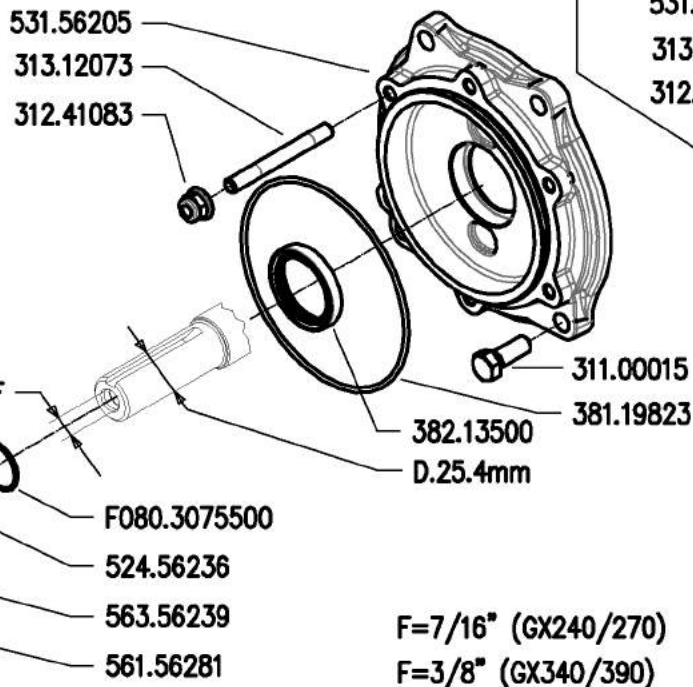


GX 160-200

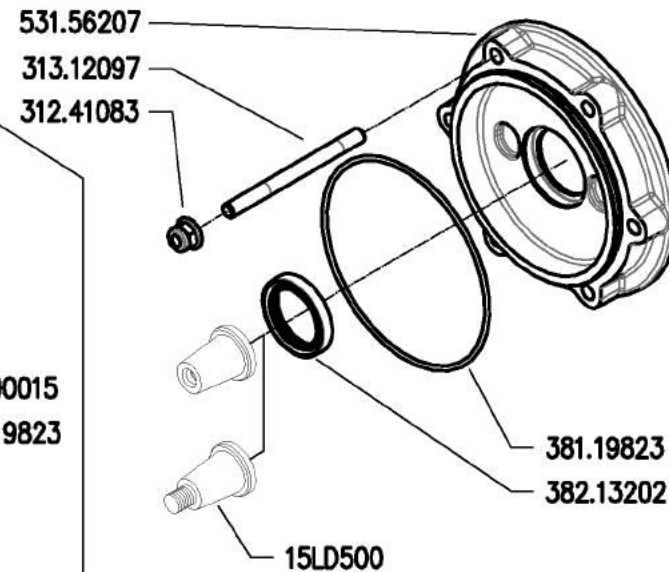
★ 3LD510



GX 240-270-340-390



F=7/16" (GX240/270)
F=3/8" (GX340/390)



15LD350-440-500
L70-100



700 serie PS
PowerSafe®

ENGINE FLANGES
BRIDAS MOTOR

FLANGIE MOTORE

BRIDES MOTEUR
MOTOR FLANSCH

DALLA MACCHINA
DE LA MAQUINA
DE LA MACHINA
FROM THE MACHINE
AB DER MASCHINE

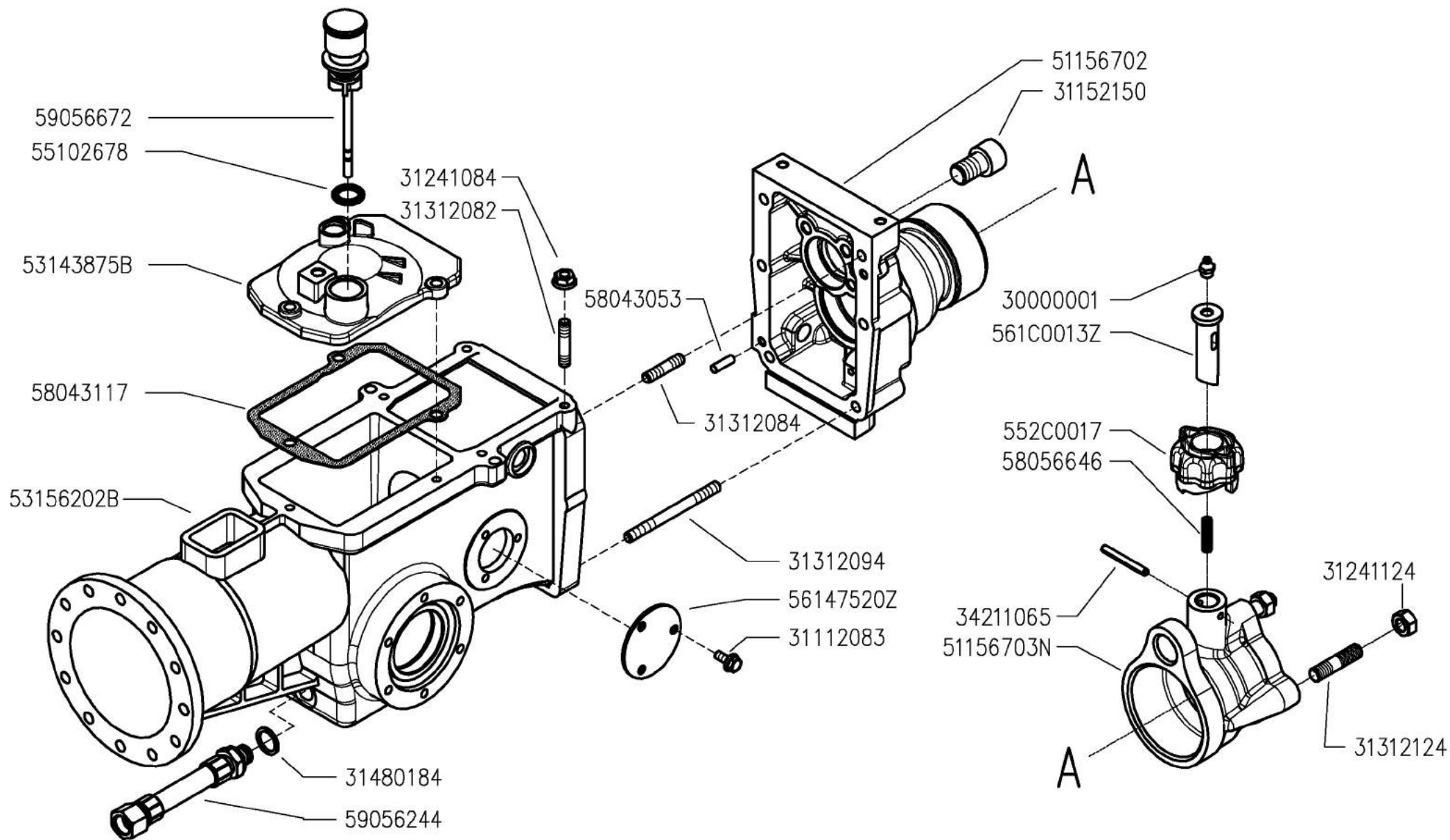
★ N.

AGGIORNAMENTO
APLAZAMIENTO
MISE A JOUR
REVISION
ANPASSUNG

F01

Rev.
1

11/2010



700 serie PS
PowerSafe®

GEARBOX
CAJA DE CAMBIO

SCATOLA CAMBIO
(750)

BOITE DE VITESSES
WECHSELGETRIEBE

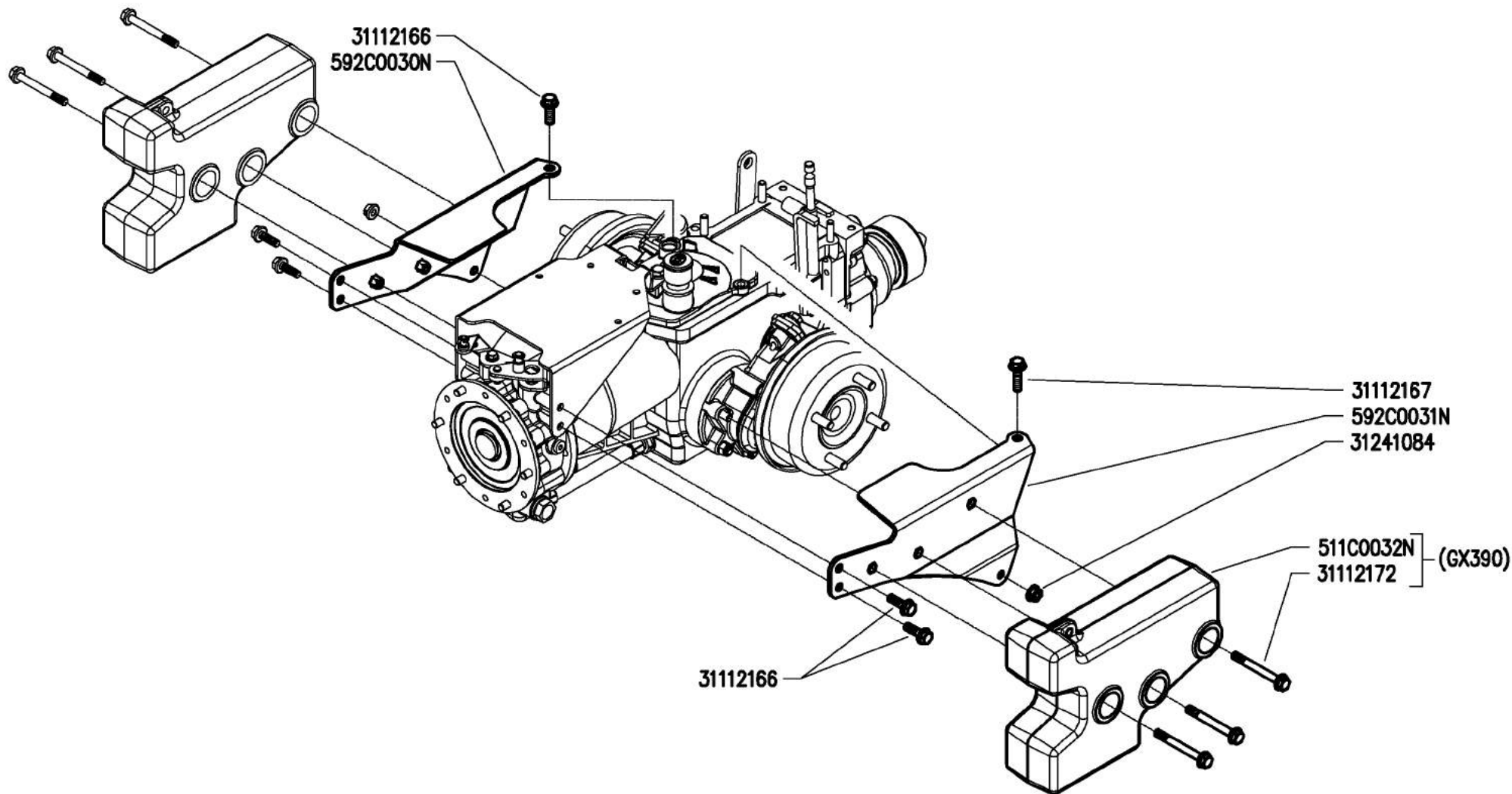
DALLA MACCHINA
DE LA MAQUINA
DE LA MAQUINA
FROM THE MACHINE
AB DER MASCHINE

N.

G03 0

11/2010

Rev.



700 serie PS
PowerSafe®

FARINGS
CARENADOS

CARENATURE (750)

CARENAGES
VERKLEIDUNGEN

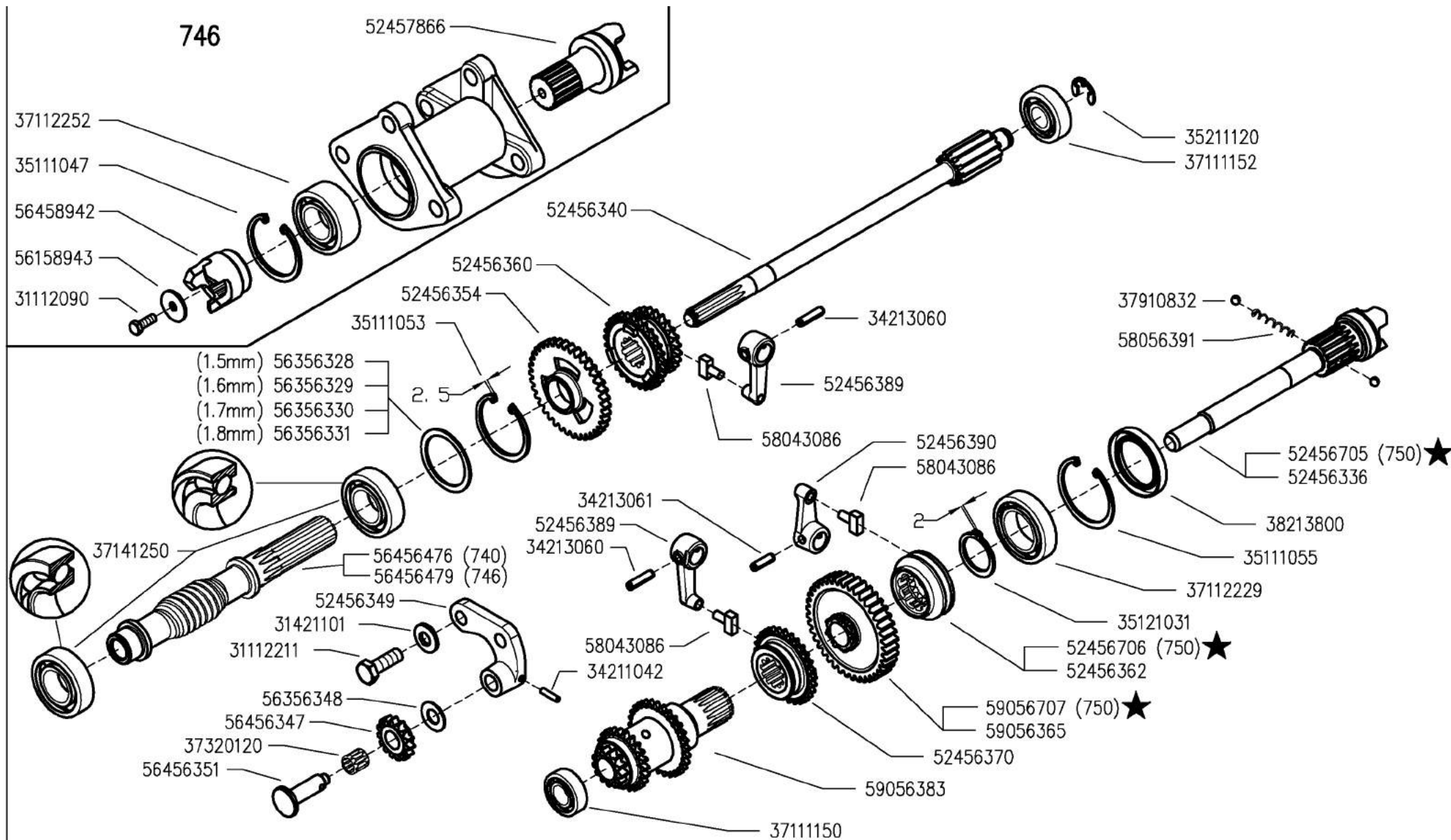
DALLA MACCHINA
DE LA MAQUINA
DE LA MAQUINA
FROM THE MACHINE
AB DER MASCHINE

N.

G04 0

11/2010

Rev.



700 serie PS
PowerSafe®

GEARS
ENGRANAJES

INGRANAGGI CAMBIO
(740-746-750 ★)

ENGRANAGES
ZÄHRÄDER

DALLA MACCHINA
DE LA MAQUINA
DE LA MACHINA
FROM THE MACHINE
AB DER MASCHINE

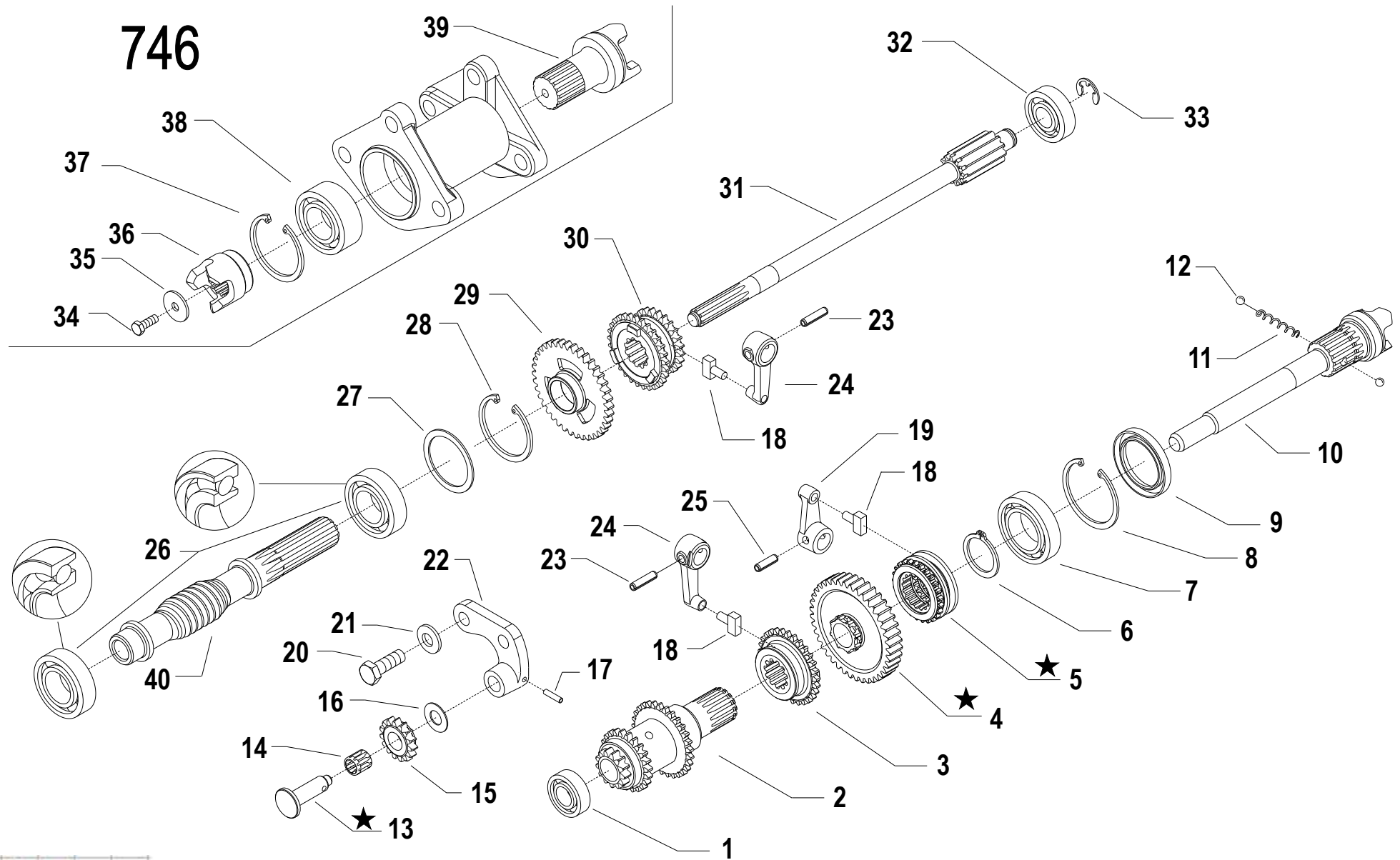
★ N.

AGGIORNAMENTO
APLAZAMIENTO
MISE A JOUR
REVISION
ANPASSUNG

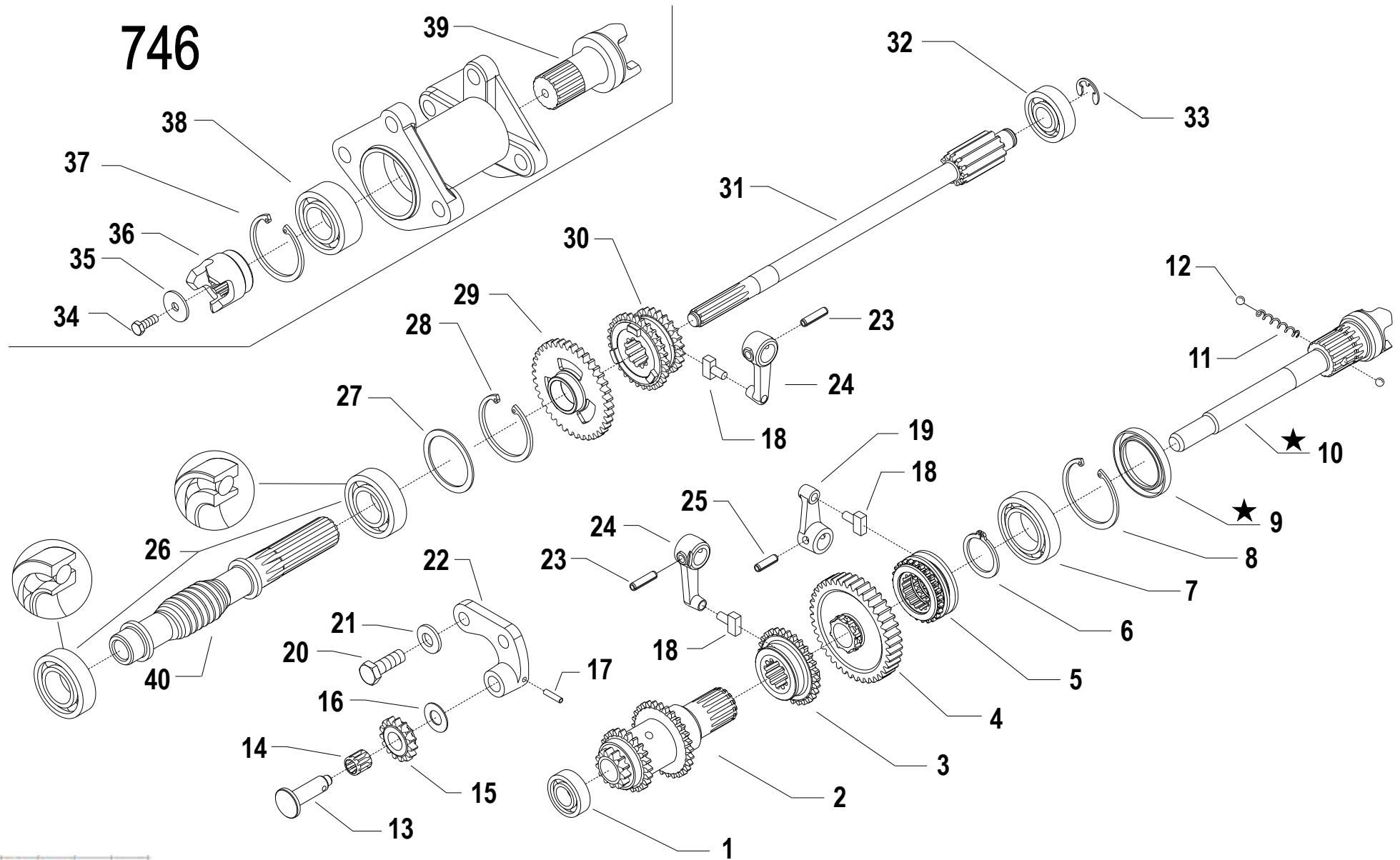
H03

11/2010

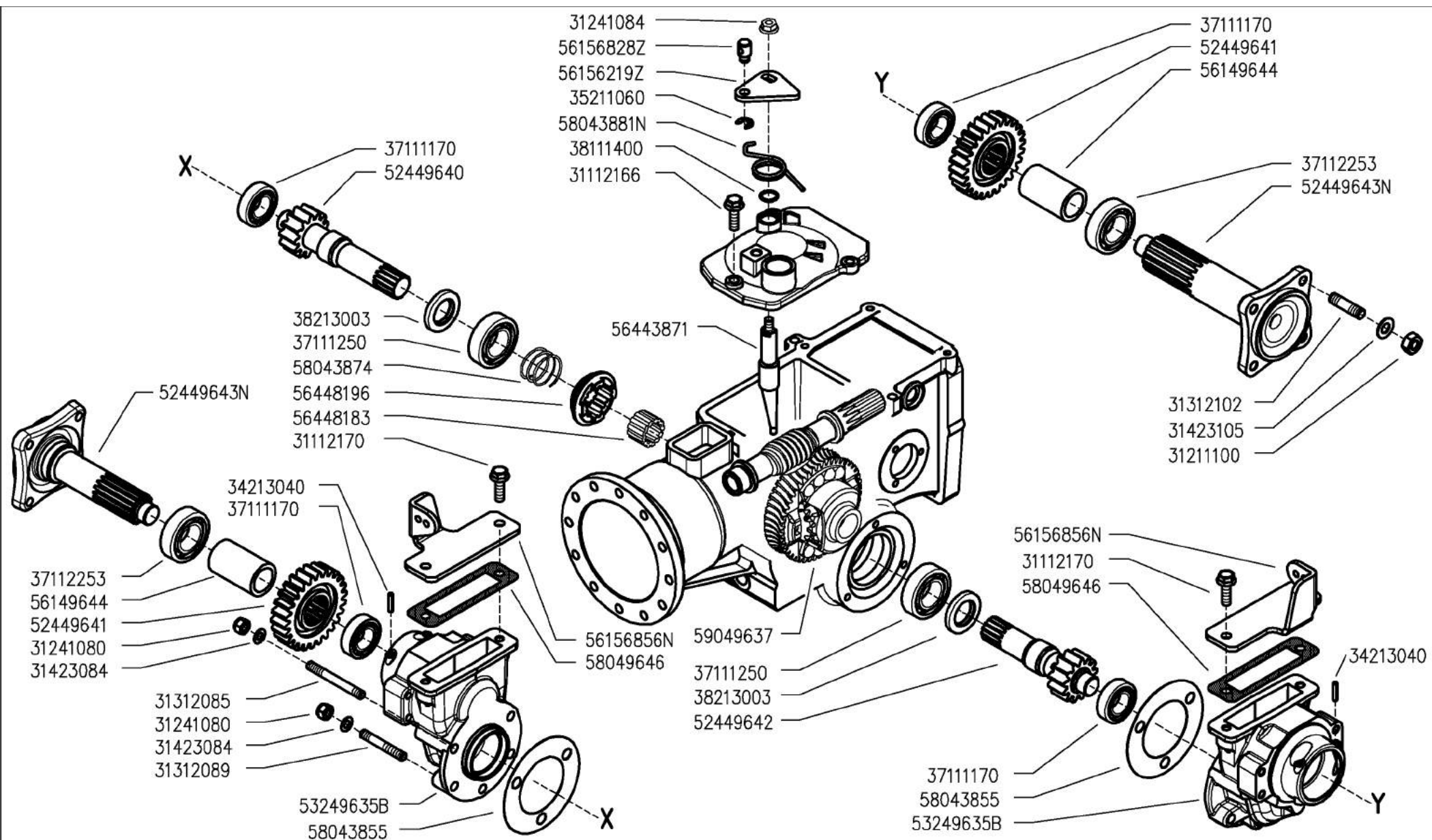
Rev. 1



i = info - stop 2 sec. ★ = new part



i = info - stop 2 sec. ★ = new part



700 serie PS
PowerSafe®

WHEELS AXLE
EJE RUEDAS

ASSE RUOTE
(746-750 ★)

ESSIEUS ROUES
RÄDACHSE

DALLA MACCHINA
DE LA MAQUINA
DE LA MAQUINA
FROM THE MACHINE
AB DER MASCHINE

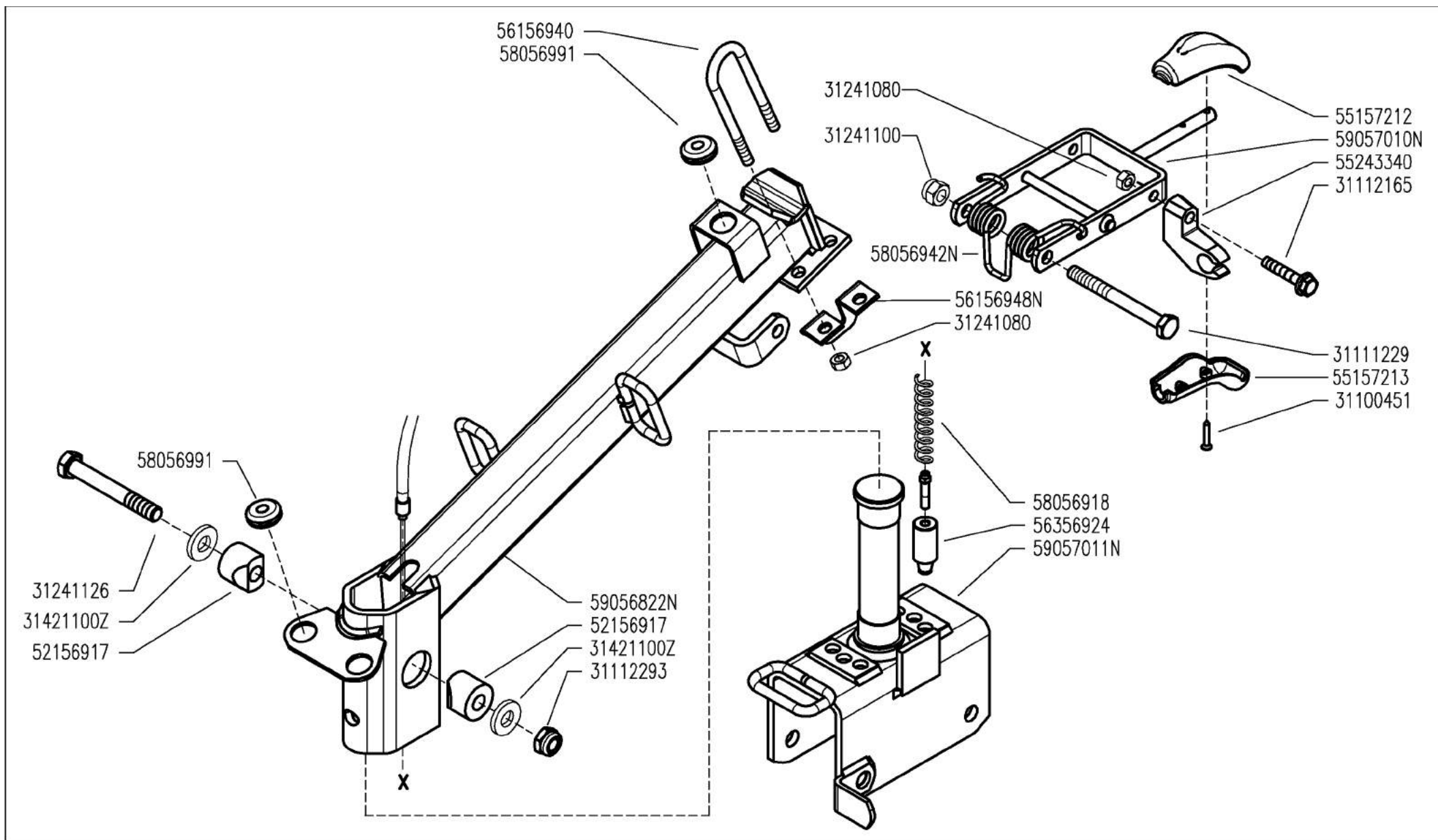


AGGIORNAMENTO
APLAZAMIENTO
MISE A JOUR
REVISION
ANPASSUNG

104

11/2010

Rev.
1



700 serie PS
PowerSafe®

STEERING COLUMN
COLUMNA

PIANTONE
(740-746-750 ★)

PLANTON
LENKSÄULE

DALLA MACCHINA
DE LA MAQUINA
DE LA MACHINA
FROM THE MACHINE
AB DER MASCHINE

★ N.

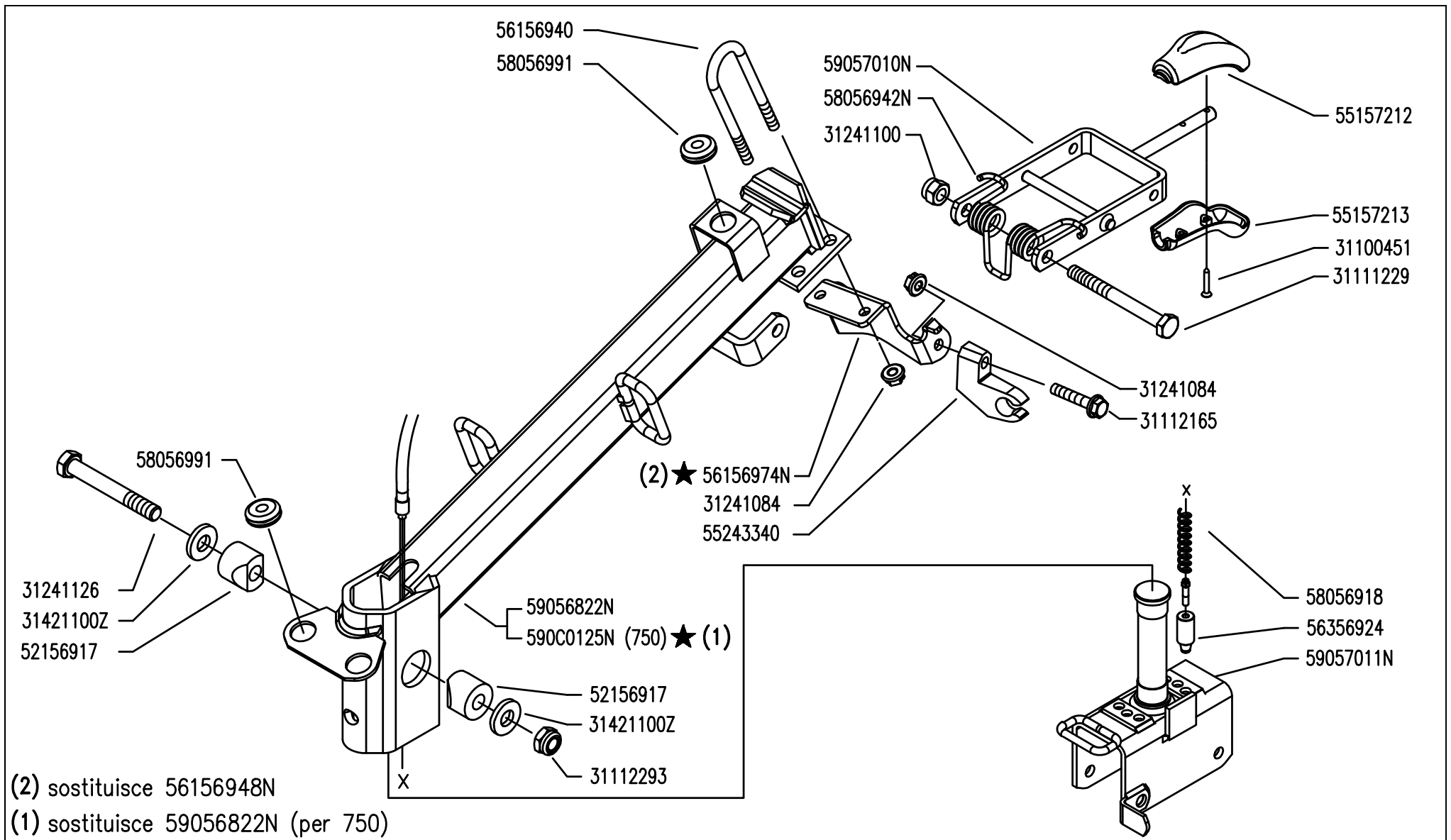
AGGIORNAMENTO
APLAZAMIENTO
MISE A JOUR
REVISION
ANPASSUNG

J03


11/2010

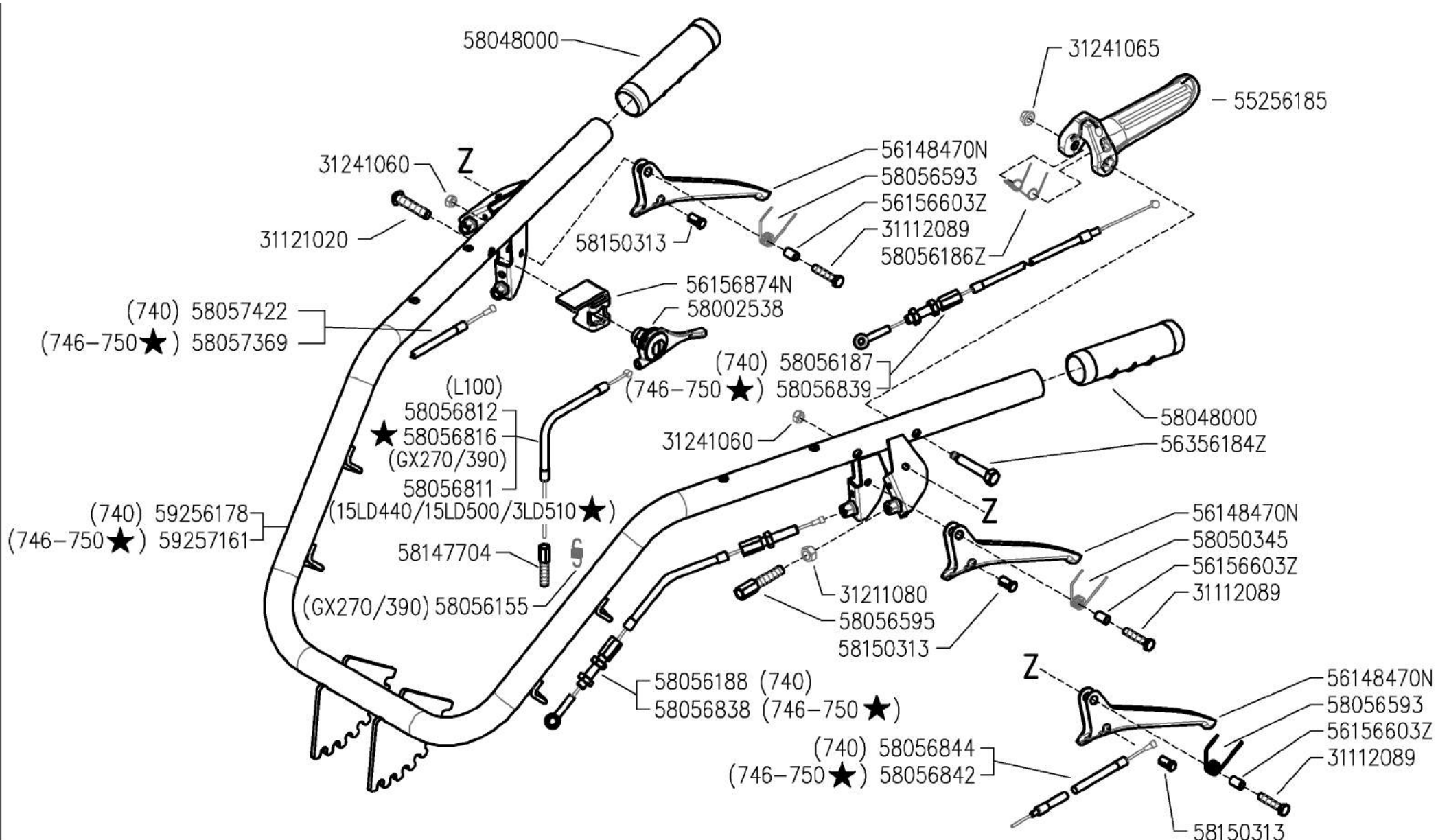
Rev.

1

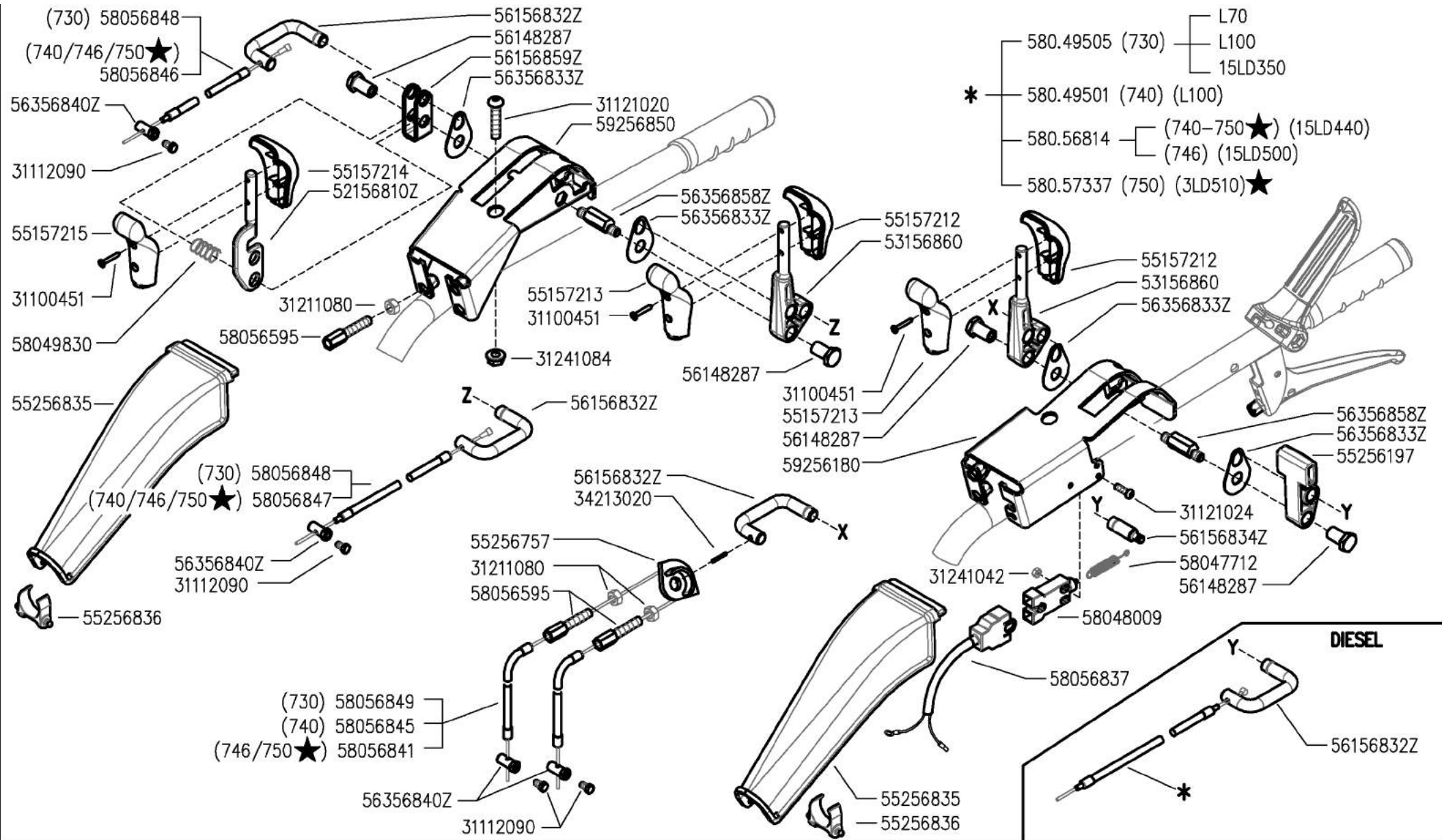


(2) sostituisce 56156948N
 (1) sostituisce 59056822N (per 750)

	700 serie PS <i>PowerSafe®</i>	STEERING COLUMN COLUMNA	PIANTONE (740-746-750)	PLANTON LENKSÄULE	DALLA MACCHINA DE LA MAQUINA DE LA MACHINE FROM THE MACHINE AB DER MASCHINE ★ N.	<input type="text"/>	J03	Rev. 2
						901936		



	700 serie PS PowerSafe®	HANDLEBAR MANILLAR	MANUBRIO (740-746-750★)	MANCHERON LINCHER	DALLA MACCHINA DE LA MAQUINA DE LA MACHINA FROM THE MACHINE AB DER MASCHINE	AGGIORNAMENTO	K03	Rev. 1
						APLAZAMIENTO		
						★N.	MISE A JOUR	11/2010
							REVISION	
							ANPASSUNG	



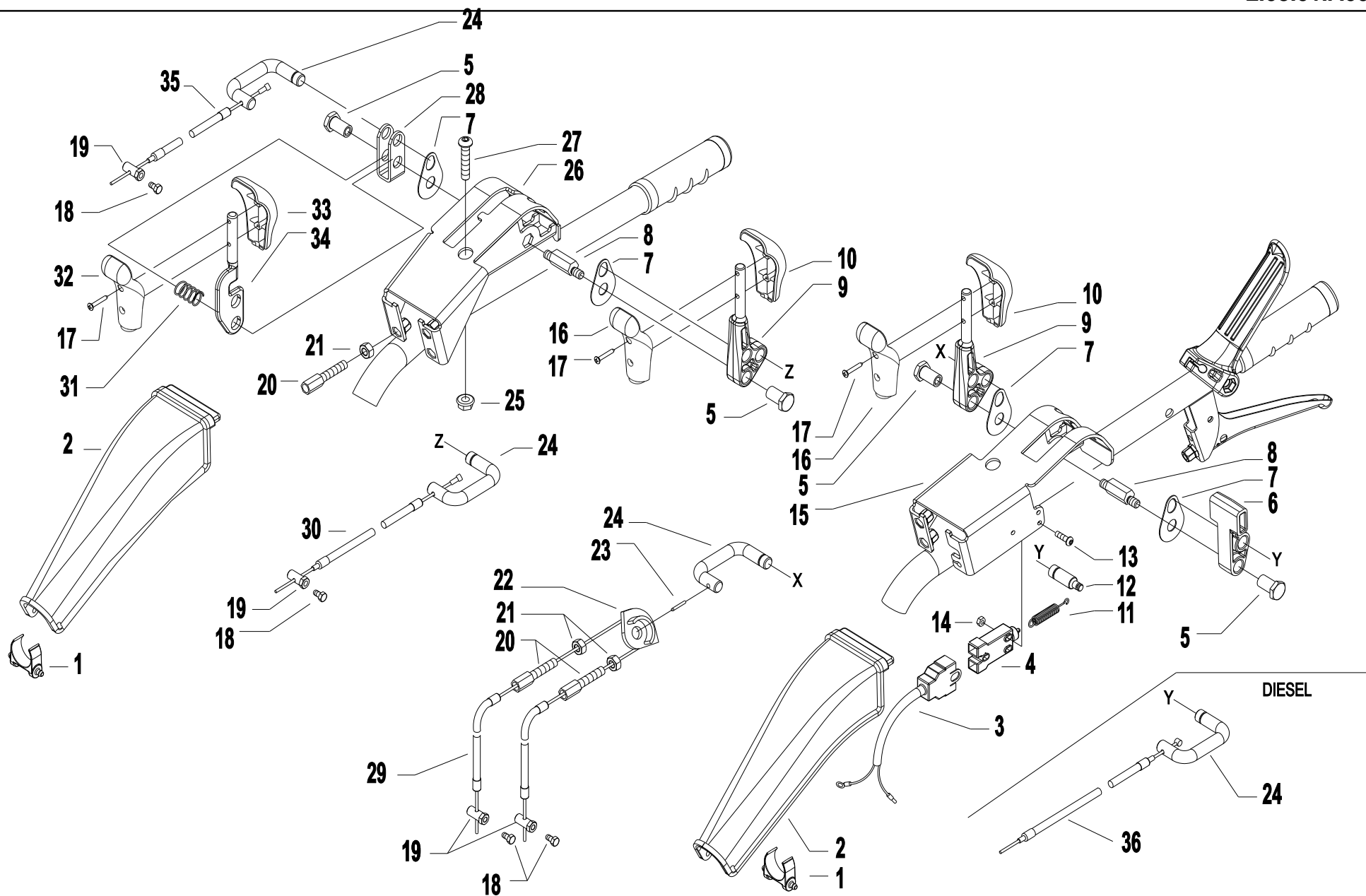
700 serie PS
PowerSafe®

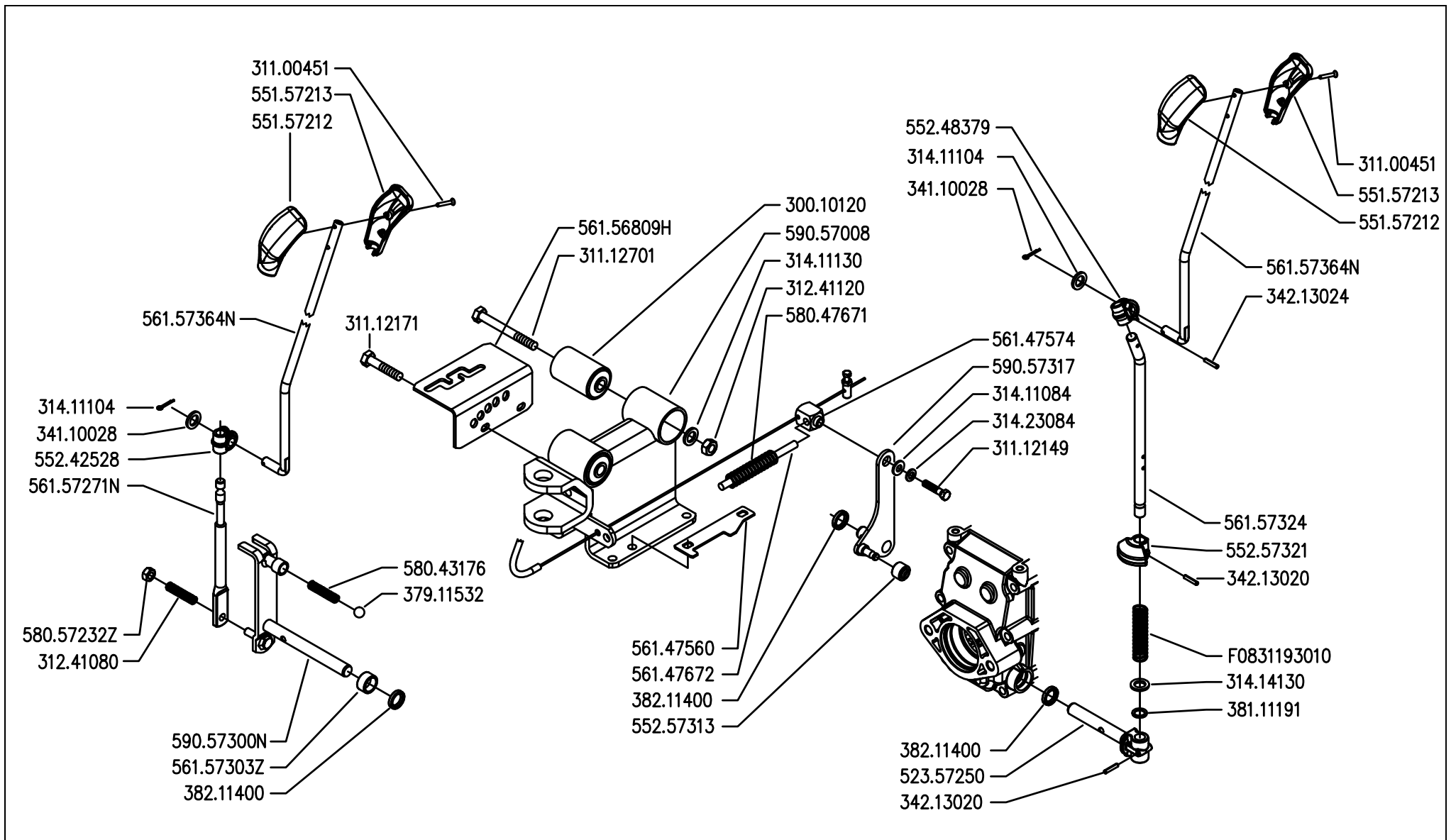
COMANDI SUL MANUBRIO
 (730-740-746-750★)
 HANDLEBAR CONTROLS
 CONTROLES SUR LE MANCHERON
 CONTROLES EN EL MANILLAR
 CONTROLES AM LINCHER

DALLA MACCHINA
 DE LA MAQUINA
 DE LA MACHINA
 FROM THE MACHINE
 AB DER MASCHINE
 ★ N.

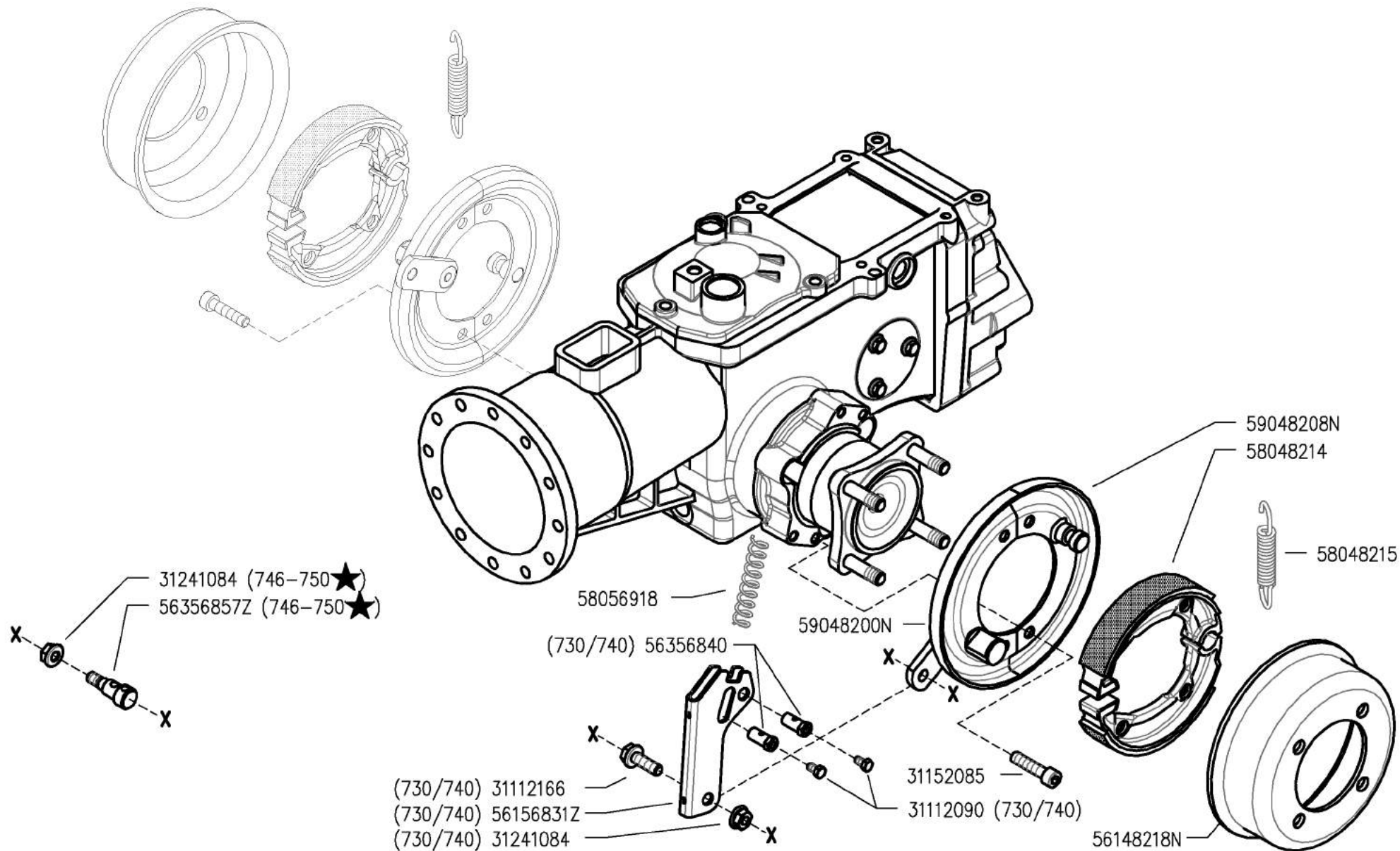
AGGIORNAMENTO
 APLAZAMIENTO
 MISE A JOUR
 REVISION
 ANPASSUNG

L03
 11/2010





	700 serie PS PowerSafe®	CONTROLS MANDOS	COMANDI (740-746-750★)		DALLA MACCHINA DE LA MAQUINA FROM THE MACHINE AB DER MASCHINE ★ N.	AGGIORNAMENTO	M03 1	Rev. 1
			APLAZAMIENTO					
			MISE A JOUR					
			REVISION					
						ANPASSUNG	11/2010	



700 serie PS
PowerSafe®

BRAKES
FRENOS

FRENI
(730-740-746-750 ★)

FREINS
BREMSEN

DALLA MACCHINA
DE LA MAQUINA
DE LA MACHINA
FROM THE MACHINE
AB DER MASCHINE

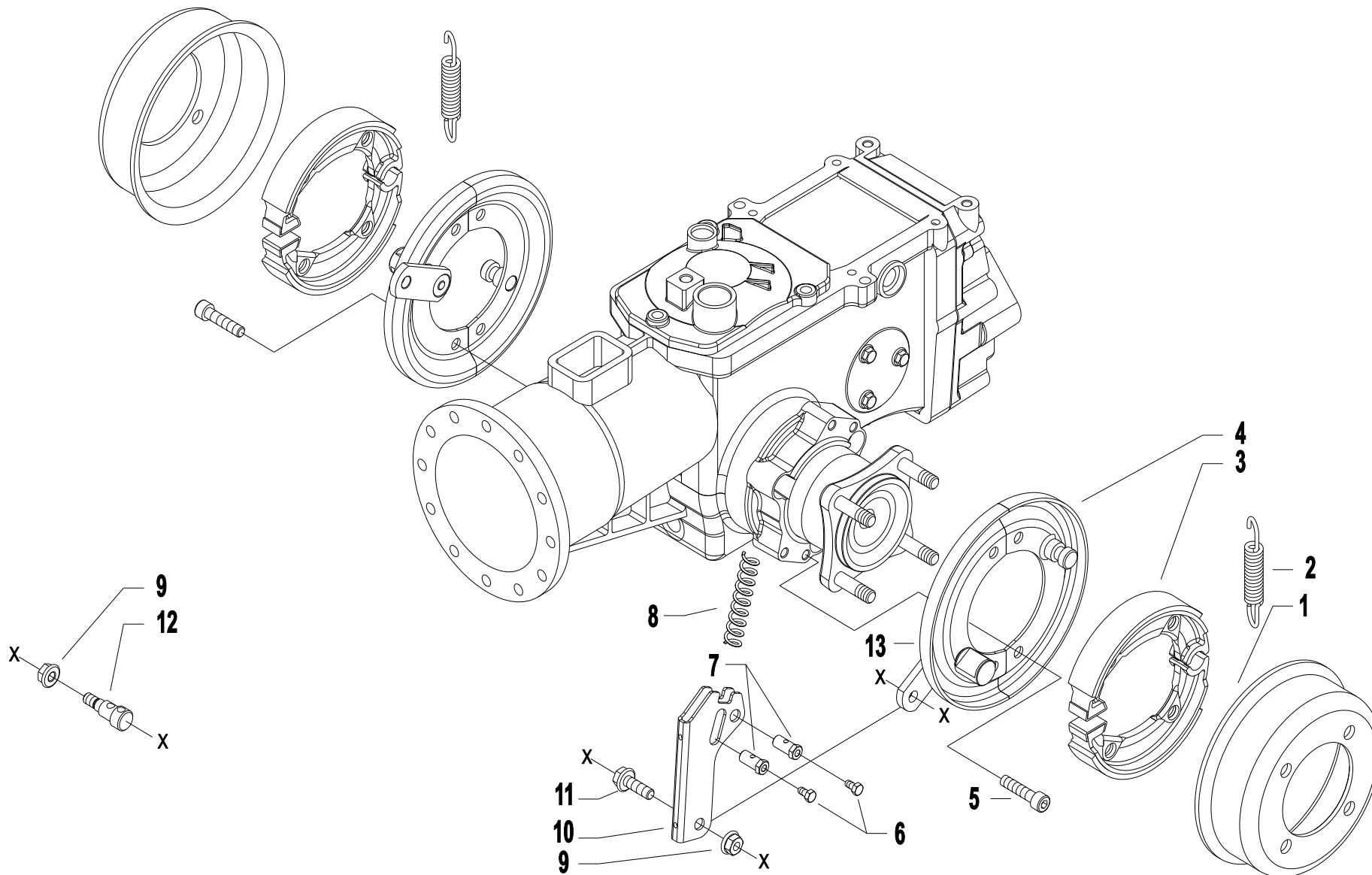
★N.

AGGIORNAMENTO
APLAZAMIENTO
MISE A JOUR
REVISION
ANPASSUNG

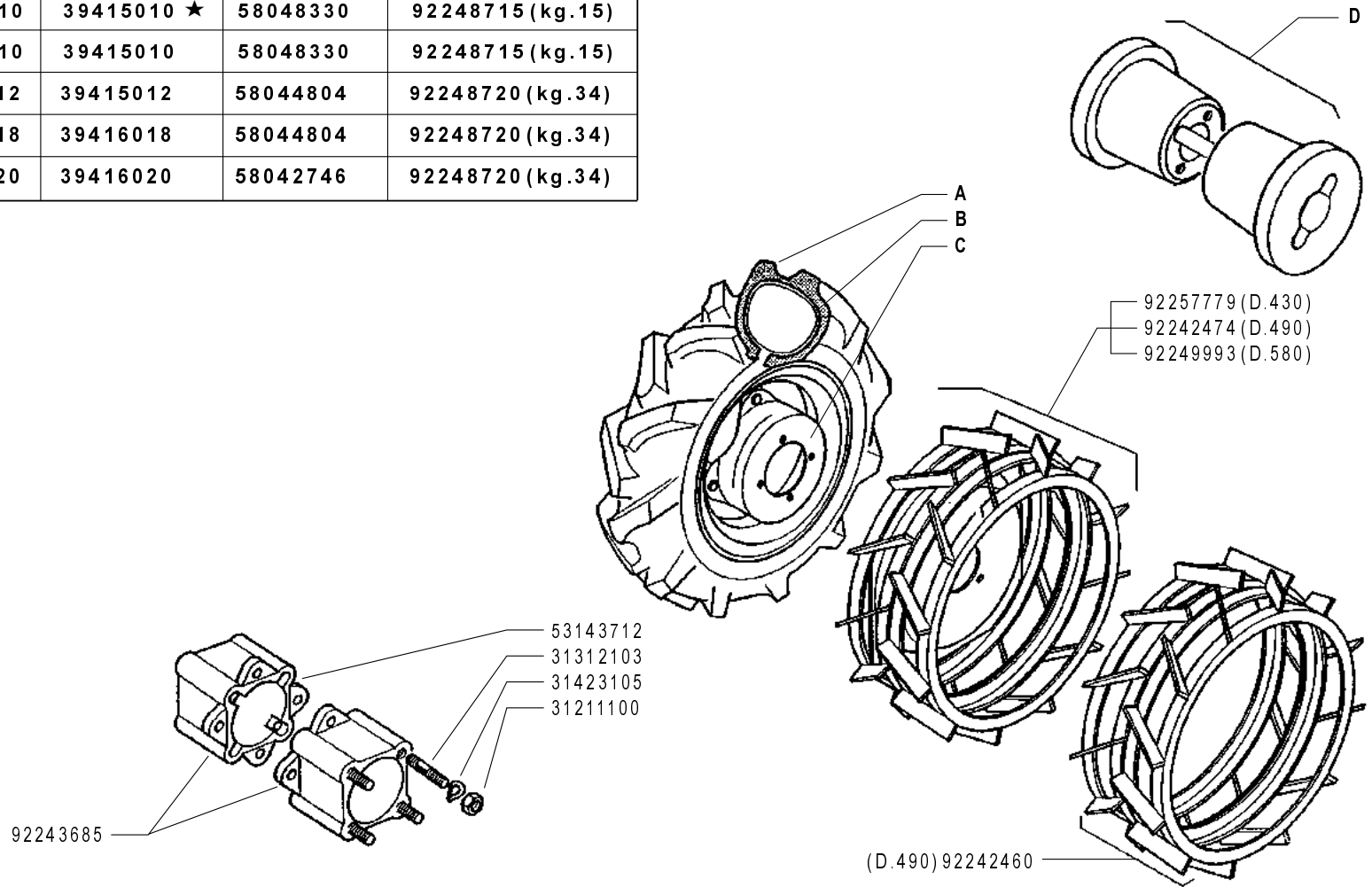
N02 1

11/2010

Rev.



	A	B	C	D
4.00 - 8"	39114008	39414008	58043250	92243686 (kg.10)
4.0 - 10"	39114010	39415010 ★	58048330	92248715 (kg.15)
5.0 - 10"	39115010	39415010	58048330	92248715 (kg.15)
5.00 - 12"	39115012	39415012	58044804	92248720 (kg.34)
6.5/80 - 12"	39116018	39416018	58044804	92248720 (kg.34)
6.5/80 - 15"	39116020	39416020	58042746	92248720 (kg.34)



700 serie **PS**
PowerSafe®

WHEELS
RUEDAS

RUOTE

ROUES
RÄDER

DALLA MACCHINA
FROM THE MACHINE
DE LA MACHINE
DE LA MAQUINA
AB DER MASCHINE

★ N.

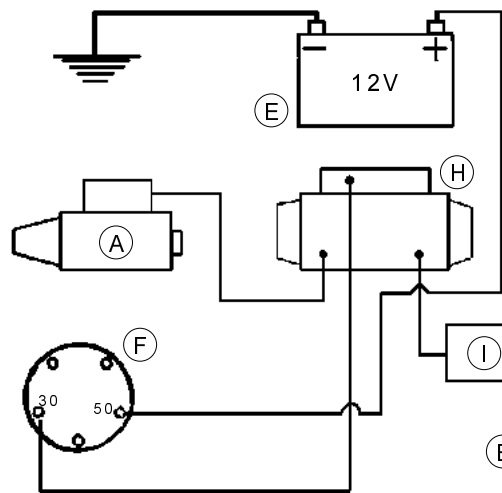
AGGIORNAMENTO
REVISION
MISE A JOUR
APLAZAMIENTO
ANPASSUNG

P01 1

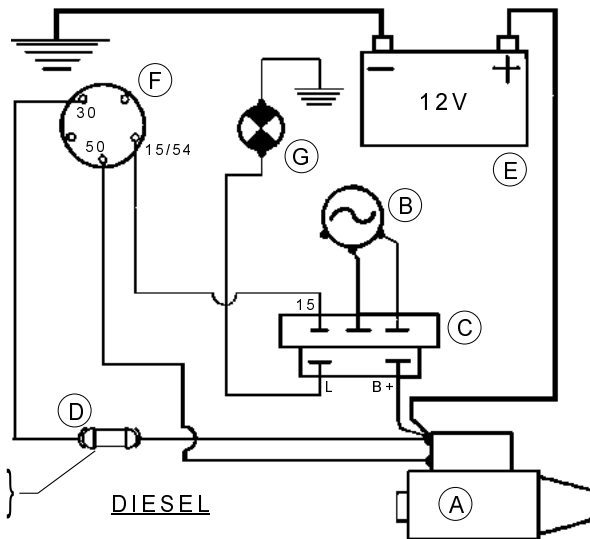
11/2010

Rev.

ZENNE

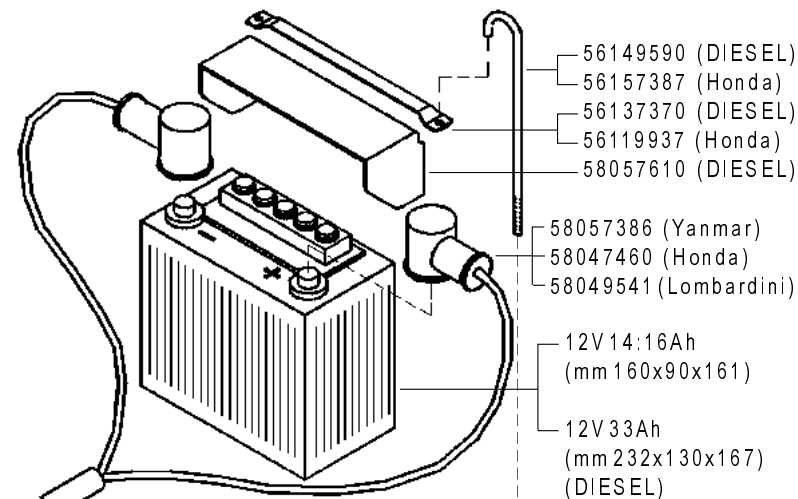


HONDA



(Yanmar) 15A
(Lombardini) 25A

DIESEL



56149590 (DIESEL)
56157387 (Honda)
56137370 (DIESEL)
56119937 (Honda)
58057610 (DIESEL)

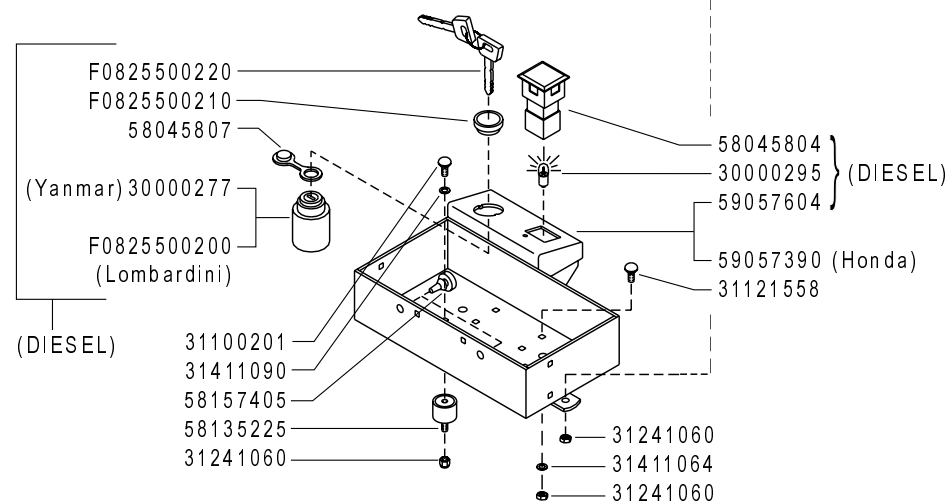
58057386 (Yanmar)
58047460 (Honda)
58049541 (Lombardini)

12V 14:16Ah
(mm 160x90x161)

12V 33Ah
(mm 232x130x167)
(DIESEL)

A	B	C	D
MOTORINO D'AVVIAMENTO STARTER DÉMARREUR MOT. DE ARRANQUE ANLASSMOTOR	GENERATORE GENERATOR GÉNÉRATEUR GENERADOR GENERATOR	REGOLATORE REGULATOR RÉGULATEUR REGULADOR REGLER	FUSIBILI FUSES FUSIBLES FUSIBLES SCHMELZSICHERUNGEN

E	F	G	H	I
BATTERIA BATTERY BATTERIE BATERIA BATERIE	INTERRUTTORE SWITCH INTERRUPTEUR INTERRUPTOR SCHALTER	SPIA CARICA BATTERIA BATTERY LONG WARN. LIGHT TEMOIN CHARG. BATTERIE LUZ CARGA BATERIA BATTERIE LADUNG KTRL. LAMPE	SOLENOIDE SOLENOID SOLÉNOÏDE SOLENOIDE SOLENOID	DIODO DIODE DIODE DIODE DIODE



F0825500220
F0825500210
58045807

(Yanmar) 30000277

F0825500200
(Lombardini)

(DIESEL)

31100201
31411090
58157405
58135225
31241060

58045804
30000295
59057604
59057390 (Honda)
31121558

31241060
31411064
31241060



700 serie PS
PowerSafe®

AVVIAMENTO ELETTRICO

ELECTRIC STARTER
ARRANQUE ELECTRICO

DÉMARRAGE ELECTRIQUE
ELEKTROSTART

DALLA MACCHINA
FROM THE MACHINE
DE LA MACHINE
DE LA MAQUINA
AB DER MASCHINE

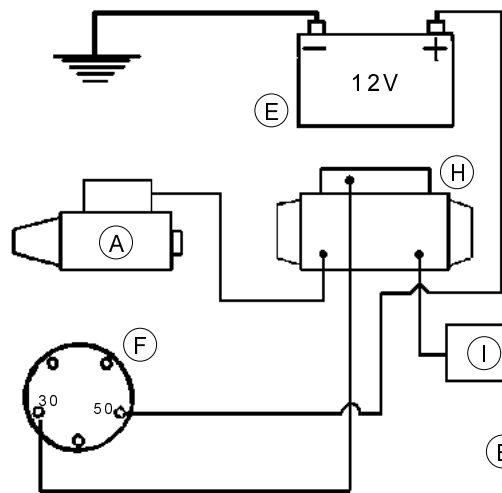
N.

Q01 0

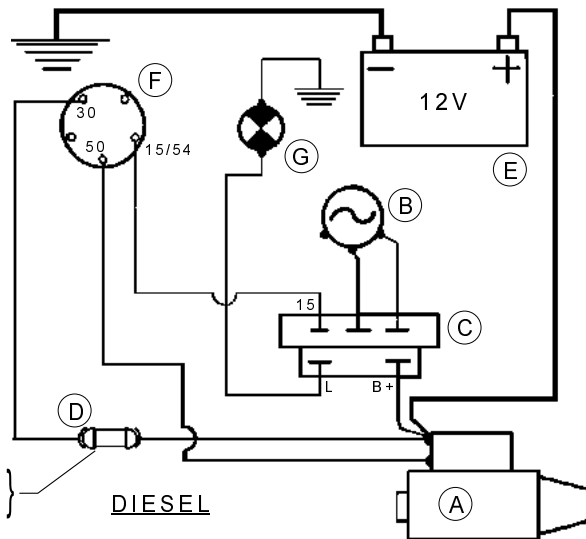
05/2009

Rev.

ZENNE

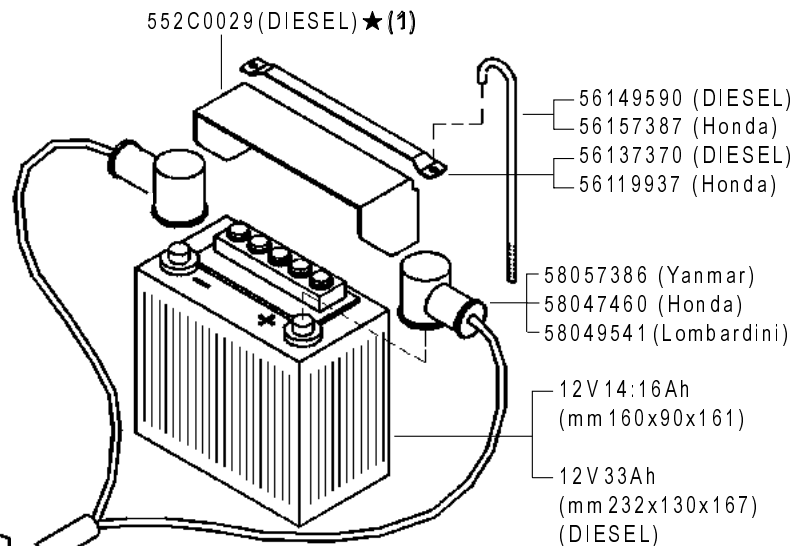


HONDA



(Yanmar) 15A
(Lombardini) 25A

DIESEL



56149590 (DIESEL)
56157387 (Honda)
56137370 (DIESEL)
56119937 (Honda)

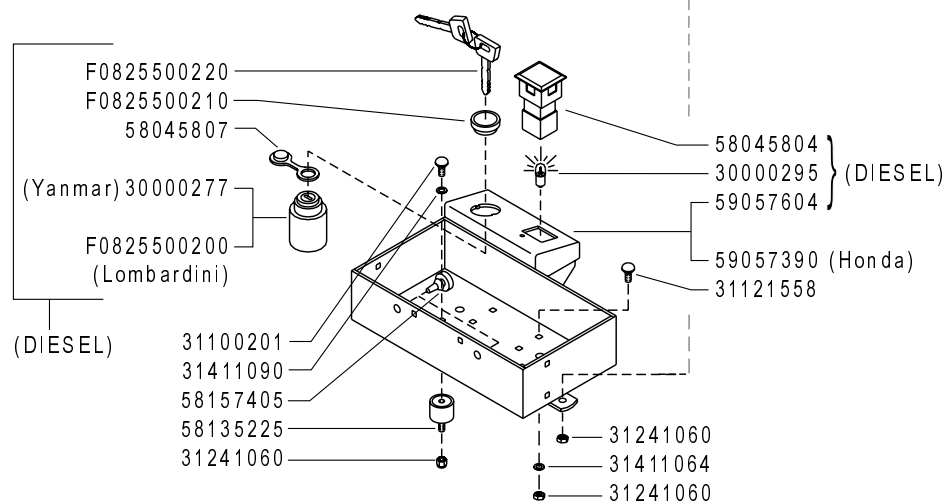
58057386 (Yanmar)
58047460 (Honda)
58049541 (Lombardini)

12V 14:16Ah
(mm 160x90x161)

12V 33Ah
(mm 232x130x167)
(DIESEL)

A	B	C	D
MOTORINO D'AVVIAMENTO STARTER DÉMARREUR MOT. DE ARRANQUE ANLASSMOTOR	GENERATORE GENERATOR GÉNÉRATEUR GENERADOR GENERATOR	REGOLATORE REGULATOR RÉGULATEUR REGULADOR REGLER	FUSIBILI FUSES FUSIBLES FUSIBLES SCHMELZSICHERUNGEN

E	F	G	H	I
BATTERIA BATTERY BATTERIE BATERIA BATERIE	INTERRUTTORE SWITCH INTERRUPTEUR INTERRUPTOR SCHALTER	SPIA CARICA BATTERIA BATTERY LONG WARN. LIGHT TEMOIN CHARG. BATTERIE LUZ CARGA BATERIA BATTERIE LADUNG KTRL. LAMPE	SOLENOIDE SOLENOID SOLÉNOÏDE SOLENOIDE SOLENOID	DIODO DIODE DIODE DIODE DIODE



F0825500220
F0825500210
58045807

(Yanmar) 30000277

F0825500200
(Lombardini)

(DIESEL)

58045804
30000295
59057604 } (DIESEL)

59057390 (Honda)
31121558

31100201
31411090
58157405
58135225
31241060
31241060
31241060

(1) sostituisce 58057610



700 serie PS
PowerSafe®

AVVIAMENTO ELETTRICO

ELECTRIC STARTER
ARRANQUE ELECTRICO

DÉMARRAGE ELECTRIQUE
ELEKTROSTART

DALLA MACCHINA
FROM THE MACHINE
DE LA MACHINE
DE LA MAQUINA
AB DER MASCHINE

★ N.

884219

Q01 1

05/2011

Rev.

ZENNE



58056864



58056866



58057746



58057451



58057676



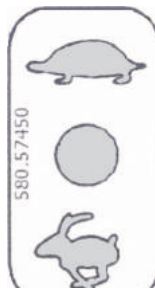
58057724



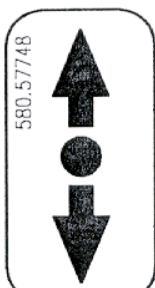
58056867



58056868



58057450



58057748



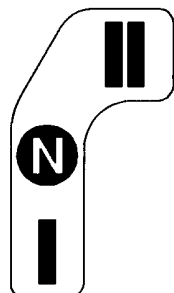
58057677



58057767



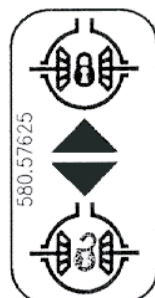
58056869



58057732



58057747



58057625



58093089



58057768



700 serie PS
PowerSafe®

STICKERS
ADHESIVOS

ADESIVE

AUTOCOLLANTS
AUFKLEBES

DALLA MACCHINA
FROM THE MACHINE
DE LA MACHINE
DE LA MAQUINA
AB DER MASCHINE

N.

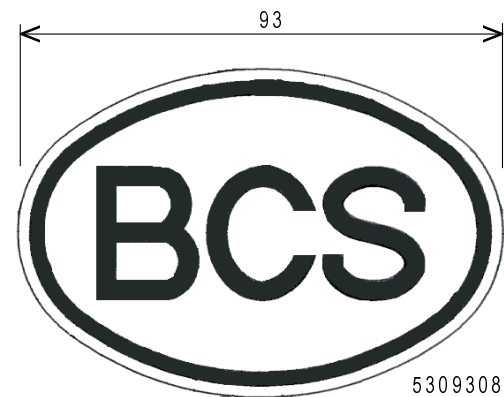
Rev.
R01 0

05/2009

ZENNE

PowerSafe®

53057666



53093088



580.57759

58057759

710

58057647

720

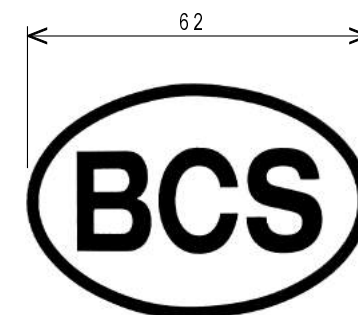
58057648

730

58057649

740

58057668



62

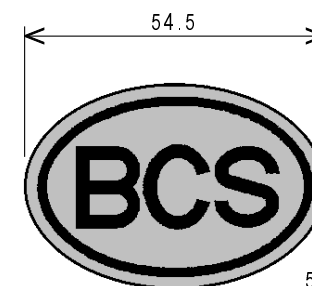
53048656

746

58057456

750

58058457★



54.5

58057643



700 serie PS
PowerSafe®

STICKERS
ADHESIVOS

ADESIVE

AUTOCOLLANTS
AUFKLEBES

DALLA MACCHINA
FROM THE MACHINE
DE LA MACHINE
DE LA MAQUINA
AB DER MASCHINE

AGGIORNAMENTO
REVISION
MISE A JOUR
APLAZAMIENTO
ANPASSUNG

★ N.

R02

11/2010

Rev.
1

ZENNE

PowerSafe®
1

EasyDrive®
2

710
3

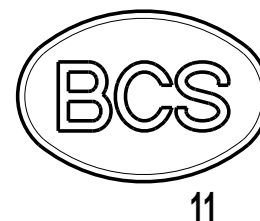
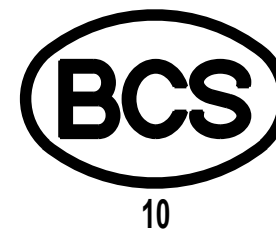
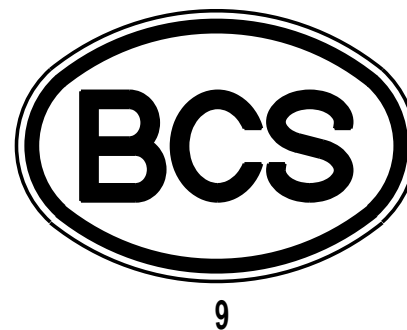
720
4

730
5

740
6

746
7

750
8



PowerSafe [®]

1

EasyDrive [®]

2



11

710

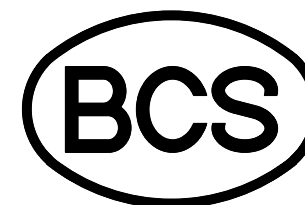
3

720

4

730

5



12

740

6

746

7

750

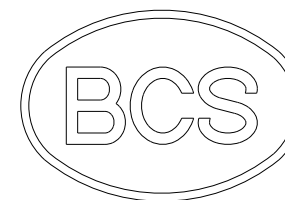
8

728

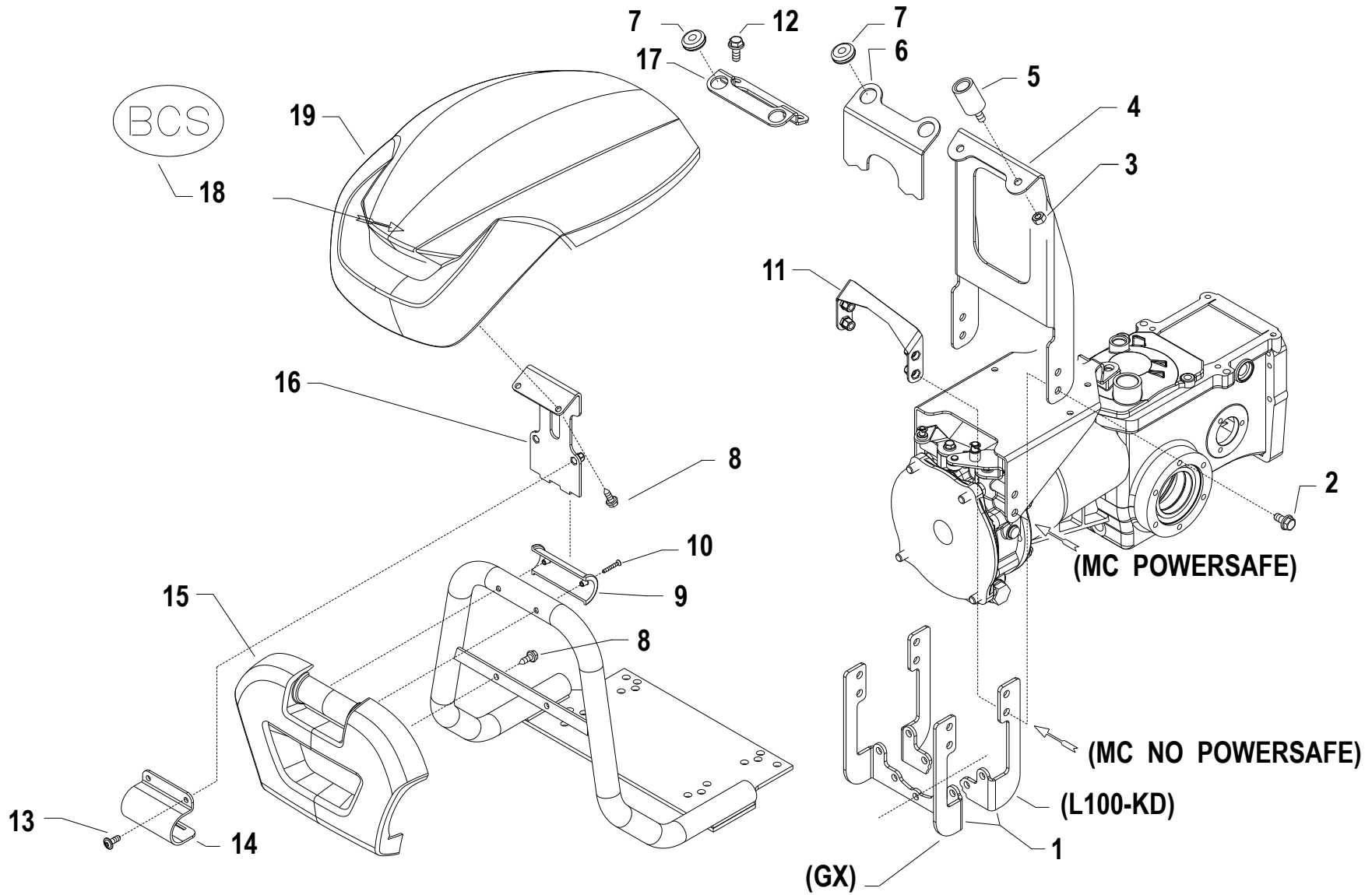
9

738

10



13



i = info - stop 2 sec. ★ = new part